

CAMINHÃO GUINDASTE ZOOMLION ZTC1000V753



ZOOMLION

4.0
PRODUTOS

ÍNDICE

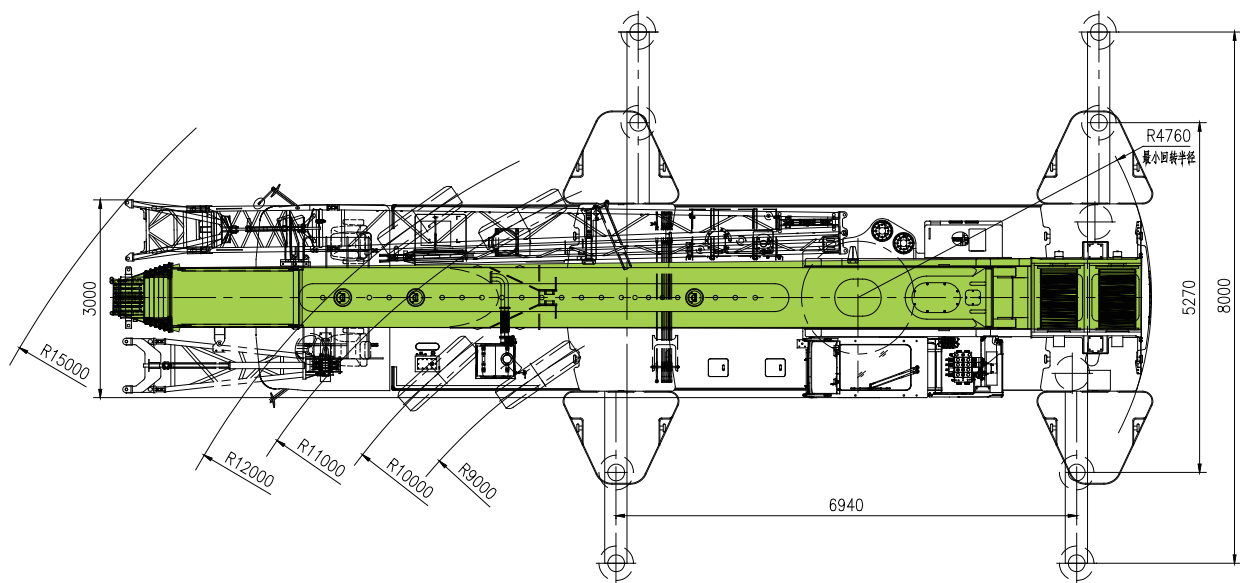
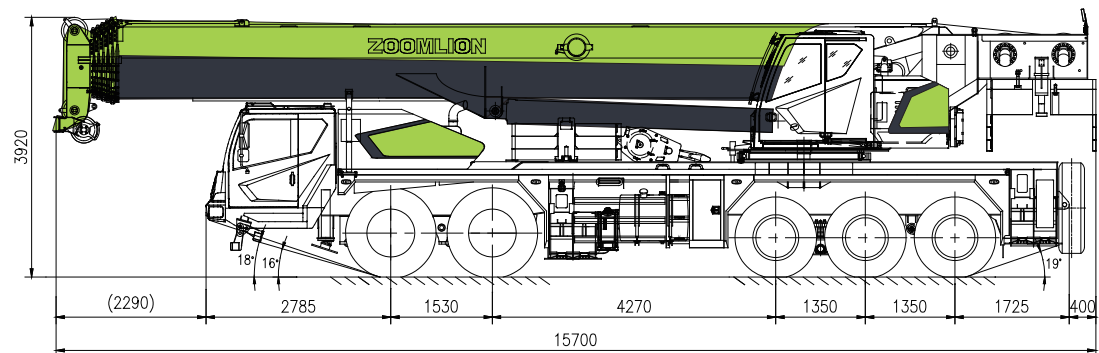
DESTAQUES	2
DIMENSÕES DO GUINDASTE	3
PESOS DO GUINDASTE E COMPONENTES	4
COMBINAÇÃO DE LANÇA / JIBS	5-6
TABELAS DE CAPACIDADE DE IÇAMENTO	7-19
ESPECIFICAÇÕES TÉCNICAS	20
PARÂMETROS TÉCNICOS PRINCIPAIS	21

DESTAQUES

- Veículo com chassi de 5 eixos inovador e robusto, capaz de se deslocar a até 50 km/h com 23t de contrapeso, garantindo alta eficiência no trânsito.
- Lança principal de 70m de comprimento, com jib de duas seções de 17,5m, alcançando uma altura de elevação de até 87,7m e 3t de carga.
- Motor WEICHAI WP12.375 + Câmbio manual de 10 marchas FAST (câmbio automático opcional) + Eixos HANDE com modo de controle de direção inteligente proporcionando melhor manobrabilidade.
- O Jib extensor de 9,5m pode ser usado individualmente com a lança principal ou com os jibs. Outros opcionais incluem o jib padrão de 7m e o jib de montagem de 3m. A altura máxima de içamento é de 97,8m com capacidade de carga de 1,5t. Outras configurações de jibs disponíveis como opcionais.
- Cabo de aço resistente à torção com cabeça especial, facilitando e reduzindo o tempo de passagem decabo.
- Quinto eixo equipado com suspensão a ar, de baixa manutenção.
- Nova cabine geração 4.0, inclinável, mais espaçosa e confortável, proporcionando uma melhor experiência de operação. b.



DIMENSÕES DO GUINDASTE



PESOS DO GUINDASTE E COMPONENTES






Eixo	1	2	3	4	5	Peso total
T	11.5	11.5	10.5	10.5	10	54

Descrição detalhada do moitão

Carga no moitão T	N° de polias	N° de linhas	Peso Kg	Observações
90	6	13	830	opcional
80	6	13	685	opcional
70	6	12	689	opcional
60	6	12	662	opcional
35	6	12	380	opcional
60	6	12	670	padrão
6.5	-	1	200	padrão

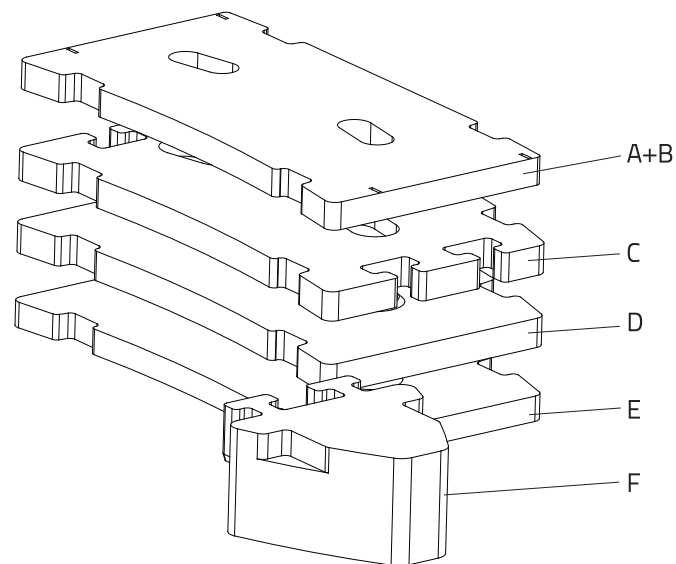
Velocidade de trabalho

	km/h MAX.		
385/95R (eixo I,II), 325/95R24 (eixo III, IV), 325/95R24 ou 415/80R22 (eixo V)	≥80	40	10/R2 (transmissão mecânica padrão) 10/R1 (transmissão automática opcional)

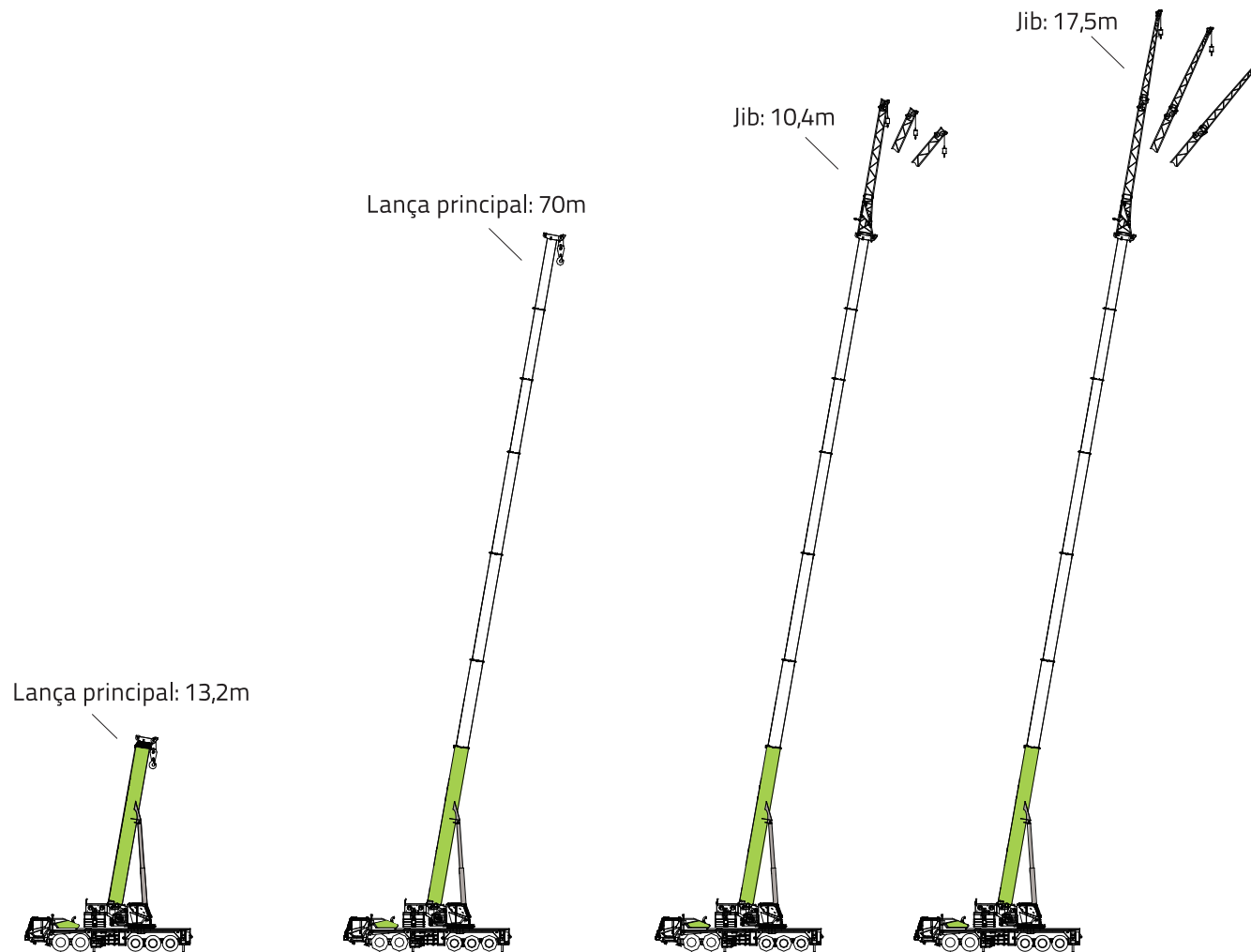
Acionamento	Velocidade de trabalho	Diâmetro/compr.do cabo de aço	Tração máx. p/ linha
	130m/min	Φ 20mm/320m	6500Kg
	110m/min	Φ 20mm/240m	6500Kg
	0 ~ 1.6r/min		
	60/60S		
	750/750S		

Contrapeso

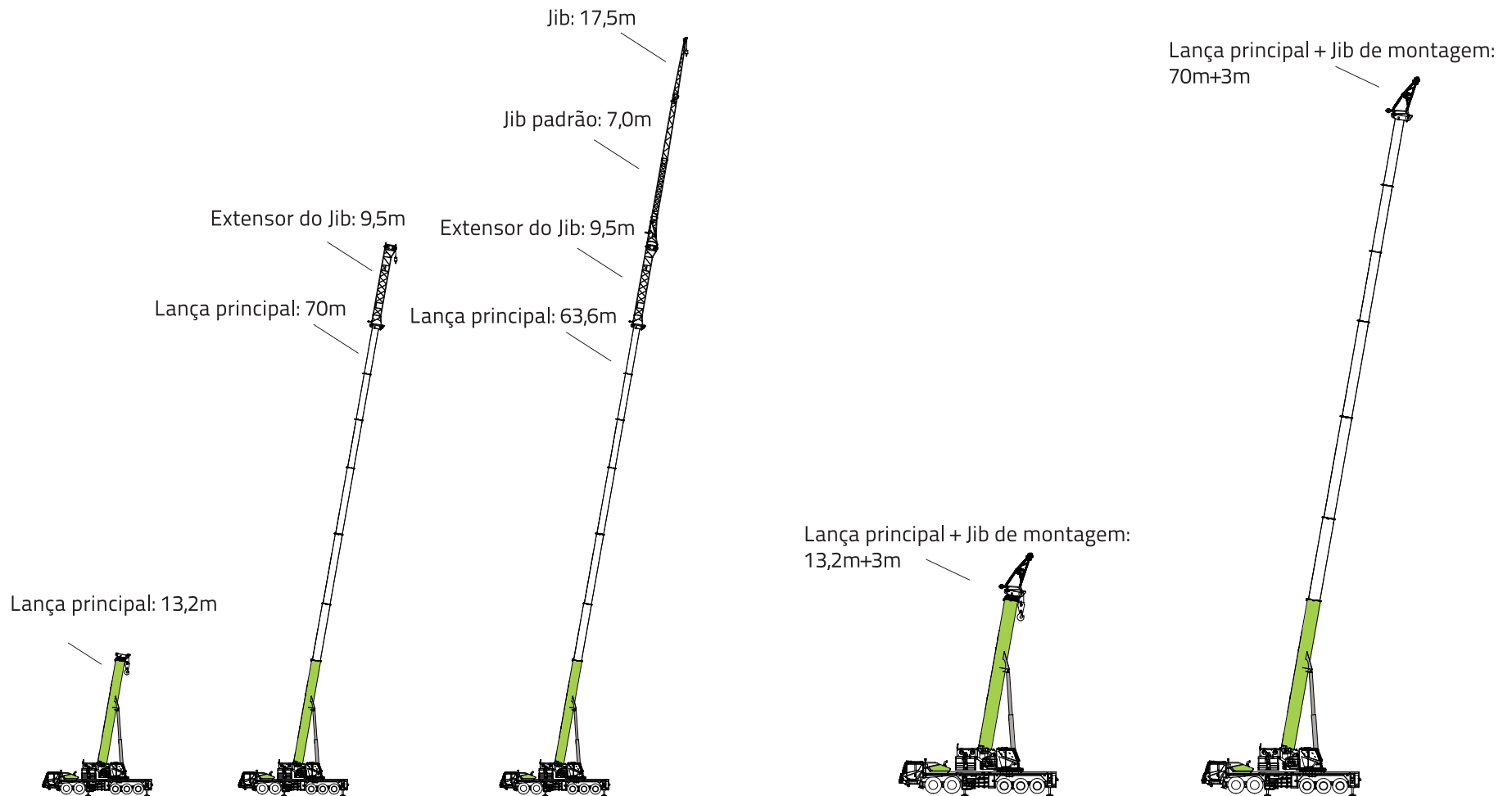
Counterweight	Medidas (C*L*A)	Peso T	3T	11T	15T	19T	23T	34T
A	2820×1644×150	3	1	1	1	1	1	1
B	2820×1644×380	8		1	1	1	1	1
C	2820×1644×190	4	-	-	-	-	1	1
D	2820×1645×190	4	-	-	-	1	1	1
E	2820×1645×630	4	-	-	1	1	1	1
F	1918×1660×520	5.5	-	-	-	-	-	2



COMBINAÇÃO DE LANÇA E JIBS

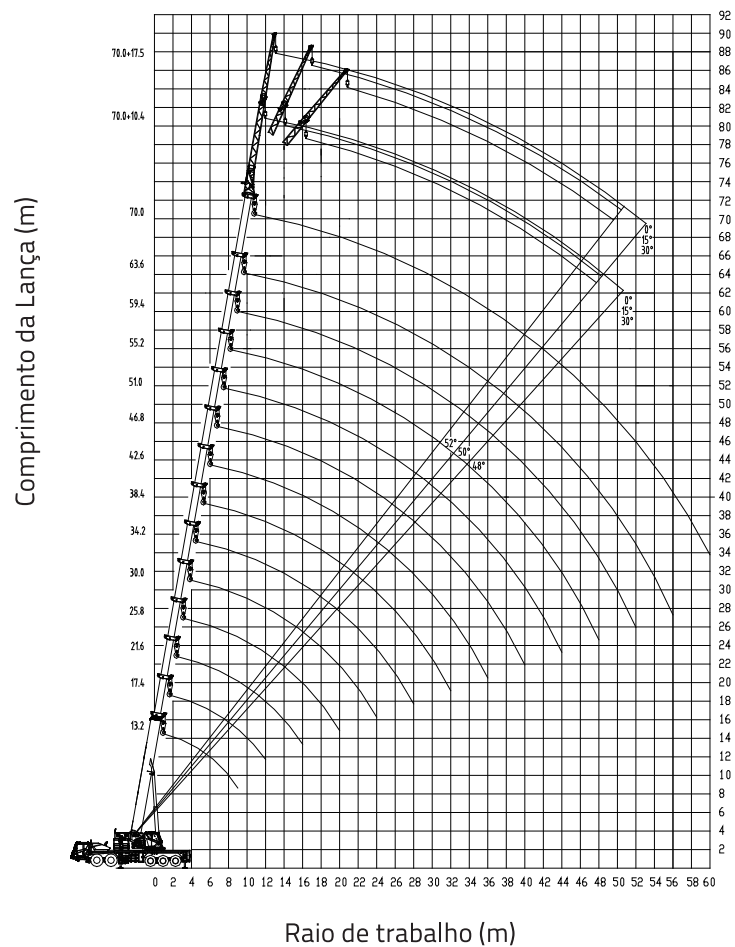


COMBINAÇÃO DE LANÇA E JIBS



CURVA DE ALTURA DE IÇAMENTO

LANÇA PRINCIPAL+JIBS



JIBS+EXTENSÃO+JIB PADRÃO

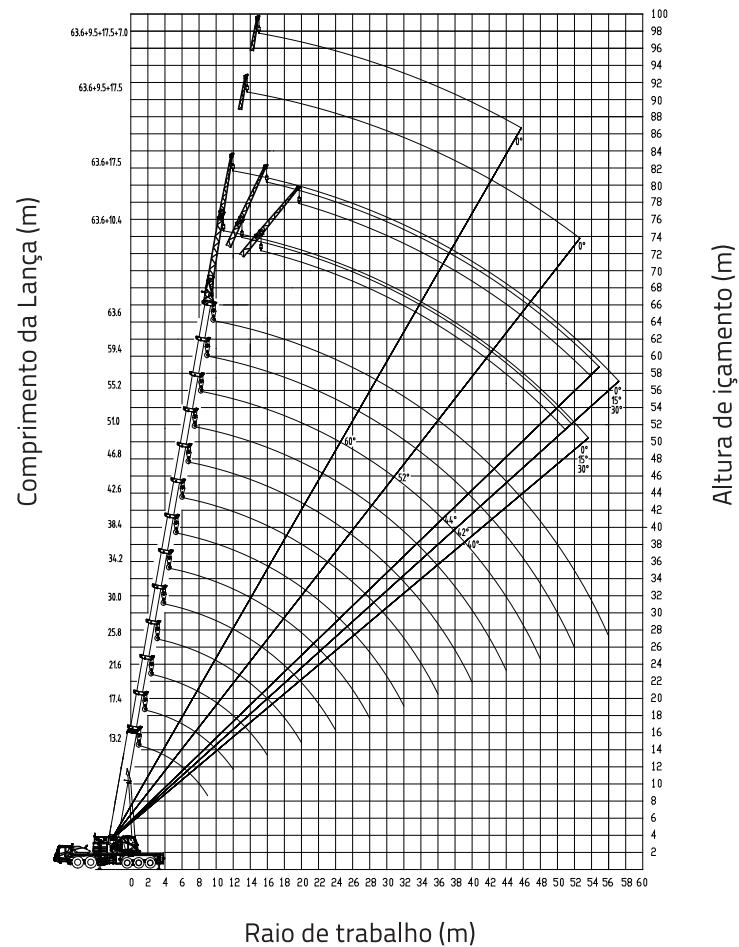


TABELA DE CAPACIDADE NOMINAL DE IÇAMENTO

Nota: O operador pode seguir as instruções abaixo para selecionar o gancho conforme a carga a ser levantada.

1. Carga igual ou menor a 60t, utilizar moitão de 60t.
2. Carga entre 60 e 70t - utilizar moitão de 70t.
3. Carga entre 70 e 80t, utilizar moitão de 80t, acrescentar uma polia e alterar passagem de cabos para 13.
4. Carga acima de 80t, utilizar moitão de 90t, acrescentar uma polia e alterar passagem de cabos para 13.

MODO DE TRABALHO DA LANÇA PRINCIPAL

Unid.: t

Patolas totalmente estendidas a 8,0m, contrapeso de 34t, operação lateral e traseira													
Raio (m)	Comprimento da lança principal (m)												
	13.2*	17,4	17,4	17,4	17,4	17,4*	21,6	21,6	21,6	21,6	21,6	21.6*	
30	100.0	40.5	66.0	72.0	72.0	72.0	29.5	44.0	65.0	68.0	68.0	68.0	
35	86.0	38.0	61.0	72.0	72.0	72.0	28.0	42.0	60.0	66.0	67.0	67.0	
40	80.0	36.0	56.5	71.0	71.0	71.0	26.0	40.0	55.0	65.0	66.0	66.0	
45	75.0	34.5	52.5	70.0	70.0	70.0	24.0	38.0	52.0	63.5	65.0	65.0	
50	70.0	33.0	49.0	65.0	66.0	66.0	23.0	36.0	49.0	60.0	63.0	63.0	
55	67.0	31.5	46.0	61.0	62.0	62.0	22.0	34.0	46.0	56.0	60.0	60.0	
60	61.0	30.0	43.0	57.5	59.0	59.0	21.0	31.5	43.0	53.0	57.0	57.0	
70	52.0	27.5	38.5	51.5	52.0	52.0	19.0	29.0	39.0	47.0	50.0	50.0	
80	45.0	25.5	35.0	45.5	45.5	45.0	17.0	26.5	36.0	44.0	44.5	44.5	
90	37.0	24.0	32.0	40.0	40.0	39.5	16.0	24.5	33.0	39.0	39.0	39.0	
100		22.5	29.5	36.0	36.0	35.5	15.0	22.5	30.0	36.0	35.5	35.0	
110		21.5	27.0	32.5	32.5	32.0	13.9	21.0	28.0	32.5	32.0	31.5	
120		20.3	25.5	29.5	29.5	29.0	13.0	19.5	26.0	31.0	30.0	29.0	
140							11.5	17.0	23.0	26.5	25.5	24.5	
160							10.4	15.0	20.5	21.0	20.5	19.5	
180													
200													
220													
240													
260													
280													
300													
320													
340													
360													
380													
400													
420													
440													
460													
480													
500													
Passagens decabo	12	12						12					
Moitão	60t												
Modo telescópico	I	1	1	1	1	1	1	1	1	1	1	1	2
	II	1	1	1	1	1	2	1	1	1	1	2	2
	III	1	1	1	1	2	1	1	1	1	2	2	1
	IV	1	1	1	2	1	1	1	1	2	2	1	1
	V	1	1	2	1	1	1	1	2	2	1	1	1
	VI	1	2	1	1	1	1	3	2	1	1	1	1

MODO DE TRABALHO DA LANÇA PRINCIPAL

Unid.t

Patolas totalmente estendidas a 8,0m, contrapeso de 34t, operação lateral e traseira													
Raio (m)	Compr. da lança principal (m)												
	25,8	25,8	25,8	25,8	25,8	25,8*	30,0	30,0	30,0	30,0	30,0	30,0	30,0*
30													
35													
40	25,0	25,0	43,0	60,0	60,0	60,0							
45	23,5	23,5	41,0	56,0	60,0	60,0							
50	22,0	22,0	39,5	53,0	60,0	60,0	19,0	24,0	26,0	42,0	53,0	53,0	
55	21,0	21,0	38,0	50,0	58,0	58,0	18,5	23,0	24,5	40,5	51,5	51,5	
60	20,0	20,0	36,0	47,0	54,0	54,0	17,5	22,0	23,0	39,5	50,0	50,0	
70	18,0	18,0	33,0	42,0	49,0	49,0	15,8	20,0	21,0	36,0	48,0	48,0	
80	16,5	16,5	30,0	38,0	45,0	45,0	14,3	18,5	19,0	33,5	44,0	44,0	
90	15,0	15,0	28,0	35,0	39,5	39,5	13,0	17,0	17,5	31,0	40,0	40,0	
100	14,0	14,0	26,0	32,0	35,0	35,0	12,0	15,5	16,0	28,5	35,5	35,5	
110	13,0	13,0	24,5	30,0	32,5	32,0	11,0	14,5	15,0	27,0	31,5	31,5	
120	12,0	12,0	22,5	28,0	30,0	29,0	10,3	13,5	14,0	25,0	29,5	29,0	
140	10,5	10,5	20,0	24,0	26,0	25,0	9,0	11,9	12,2	22,0	25,5	25,0	
160	9,4	9,3	18,0	21,5	21,5	20,5	8,0	10,7	10,7	19,5	22,5	21,2	
180	8,5	8,4	16,2	18,5	17,5	16,5	7,1	9,6	9,6	17,5	18,5	17,3	
200	7,7	7,6	14,7	15,5	14,5	13,5	6,4	8,7	8,7	16,0	15,5	14,3	
220							5,8	8,0	7,9	14,3	13,2	12,0	
240							5,3	7,3	7,2	12,3	11,4	10,2	
260													
280													
300													
320													
340													
360													
380													
400													
420													
440													
460													
480													
500													
Passagens decabo	11					9							
Moitão	60t												
Modo telescópico	I	1	1	1	1	1	2	1	1	1	1	1	2
	II	1	1	1	1	2	2	1	1	1	1	2	2
	III	1	1	1	2	2	2	1	1	1	2	2	2
	IV	1	1	2	2	2	1	1	2	3	2	2	2
	V	2	3	2	2	1	1	3	3	2	2	2	1
	VI	3	2	2	1	1	1	3	2	2	2	1	1

Unid.t

Patolas totalmente estendidas a 8,0m, contrapeso de 34t, operação lateral e traseira													
Raio (m)	Compr. da lança principal (m)												
	34,2	34,2	34,2	34,2	34,2	34,2*	38,4	38,4	38,4	38,4	38,4	38,4	38,4*
30													
35													
40													
45													
50													
55													
60	19,0	21,5	25,5	26,0	43,0	46,0							
70	17,0	19,0	23,0	23,5	40,5	44,0	17,0	20,0	21,5	26,0	30,5	41,5	
80	15,5	17,5	21,0	21,5	38,0	42,0	15,5	18,5	19,5	24,0	28,0	39,0	
90	14,5	16,0	19,5	19,5	35,0	39,0	14,0	17,0	18,0	22,0	25,5	36,0	
100	13,3	14,5	18,0	18,0	32,5	36,0	13,0	15,7	16,5	20,3	23,5	33,5	
110	12,3	13,5	16,5	16,5	30,5	33,0	12,0	14,5	15,2	18,8	22,0	31,5	
120	11,5	12,5	15,5	15,5	28,5	30,0	11,0	13,5	14,0	17,5	20,5	30,0	
140	10,1	10,8	13,5	13,5	25,0	26,0	9,5	11,7	12,2	15,4	17,7	26,0	
160	8,9	9,6	11,8	11,8	22,5	22,0	8,5	10,4	10,8	13,6	15,7	22,7	
180	8,0	8,5	10,5	10,5	19,5	18,1	7,5	9,3	9,6	12,1	14,0	18,8	
200	7,2	7,7	9,5	9,4	16,5	15,1	6,7	8,4	8,6	11,0	12,5	15,8	
220	6,5	6,9	8,6	8,5	14,1	12,7	6,0	7,6	7,7	10,0	11,3	13,5	
240	6,0	6,3	7,9	7,8	12,2	10,9	5,5	6,9	7,0	9,0	10,3	11,6	
260	5,5	5,7	7,2	7,1	10,6	9,3	5,0	6,3	6,3	8,3	9,4	10,0	
280	5,1	5,3	6,6	6,5	9,3	8,0	4,5	5,8	5,8	7,6	8,6	8,7	
300							4,2	5,3	5,3	7,0	7,9	7,6	
320							3,9	4,8	4,8	6,5	7,0	6,6	
340													
360													
380													
400													
420													
440													
460													
480													
500													
Passagens decabo	8						7						
Moitão	60t												
Modo telescópico	I	1	1	1	1	1	2	1	1	1	1	1	2
	II	1	1	1	1	2	2	1	1	1	2	3	2
	III	1	1	2	3	2	2	1	2	3	3	2	2
	IV	2	3	3	2	2	2	3	3	3	2	2	2
	V	3	3	2	2	2	2	3	3	2	2	2	2
	VI	3	2	2	2	2	1	3	2	2	2	2	2

MODO DE TRABALHO DA LANÇA PRINCIPAL

Unid.t

Patolas totalmente estendidas a 80m, contrapeso de 34t, operação lateral e traseira												
Raio (m)	Compr. da lança principal (m)											
	42.6	42.6	42.6	42.6	42.6	42.6*	46.8	46.8	46.8	46.8	46.8*	
30												
35												
40												
45												
50												
55												
60												
70												
80	16.5	18.0	21.5	26.0	30.0	32.5						
90	15.0	16.5	20.0	24.0	28.0	30.0						
100	14.0	15.0	18.5	22.0	26.0	28.0	14.0	16.5	19.5	23.0	25.0	
110	12.9	14.0	17.0	20.3	24.0	26.0	12.8	15.3	18.0	21.3	23.5	
120	12.0	12.9	15.8	18.8	22.3	24.0	11.9	14.2	16.8	19.8	22.0	
140	10.4	11.0	13.8	16.3	19.5	21.0	10.3	12.3	14.6	17.4	19.0	
160	9.2	9.8	12.2	14.4	17.3	18.5	9.0	10.9	13.0	15.4	16.7	
180	8.2	8.6	10.8	12.7	15.4	16.5	8.0	9.6	11.5	13.6	14.8	
200	7.3	7.7	9.7	11.3	13.8	14.7	7.1	8.6	10.2	12.2	13.2	
220	6.6	6.9	8.7	10.2	12.5	13.0	6.4	7.7	9.2	11.0	11.8	
240	6.0	6.2	7.9	9.2	11.4	11.0	5.7	7.0	8.3	10.0	10.6	
260	5.5	5.6	7.2	8.2	9.9	9.5	5.2	6.4	7.5	9.0	9.5	
280	5.0	5.1	6.6	7.6	8.6	8.2	4.7	5.8	6.8	8.3	8.2	
300	4.6	4.7	6.0	7.0	7.5	7.1	4.3	5.3	6.2	7.6	7.1	
320	4.3	4.3	5.6	6.4	6.5	6.2	4.0	4.9	5.7	6.7	6.1	
340	4.0	3.9	5.1	5.9	5.7	5.3	3.6	4.5	5.2	5.8	5.3	
360	3.7	3.6	4.7	5.4	5.0	4.6	3.3	4.1	4.8	5.1	4.6	
380							3.0	3.8	4.4	4.4	3.9	
400							2.8	3.5	4.1	3.9	3.3	
420												
440												
460												
480												
500												
Passagens decabo	6					5						
Moitão	60t											
Modo telescópico	I	1	1	1	1	2	3	1	1	1	2	3
	II	1	1	2	3	3	2	1	2	3	3	3
	III	2	3	3	3	2	2	3	3	3	3	2
	IV	3	3	3	2	2	2	3	3	3	2	2
	V	3	3	2	2	2	2	3	3	2	2	2
	VI	3	2	2	2	2	2	3	2	2	2	2

Unid.t

Patolas totalmente estendidas a 80m, contrapeso de 34t, operação lateral e traseira												
Raio (m)	Compr. da lança principal (m)											
	51.0	51.0	51.0	51.0*	55.2	55.2	55.2*	59.4	59.4*	63.6*	70.0*	
50												
55												
60												
70												
80												
90												
100												
110	13.5	15.5	18.0	20.0								
120	13.0	14.5	17.0	19.5	13.0	14.0	15.5					
140	11.3	13.0	15.5	17.5	11.5	13.0	14.5	11.0	12.0			
160	10.0	11.5	13.8	15.4	10.5	12.0	13.5	10.5	11.5	9.5		
180	9.0	10.4	12.4	13.6	9.5	11.0	12.5	9.6	11.0	9.2	7.0	
200	8.0	9.3	11.0	12.2	8.5	9.8	11.2	9.0	10.2	9.0	7.0	
220	7.2	8.4	10.0	11.0	7.8	9.0	10.2	8.2	9.3	8.4	6.8	
240	6.5	7.6	9.0	9.8	7.0	8.2	9.3	7.5	8.5	7.8	6.5	
260	6.0	6.9	8.1	8.9	6.4	7.6	8.4	6.9	7.8	7.2	6.2	
280	5.5	6.3	7.4	8.0	5.9	6.9	7.6	6.4	7.1	6.6	5.9	
300	5.0	5.7	6.8	7.3	5.4	6.3	6.8	5.9	6.6	6.1	5.6	
320	4.5	5.2	6.2	6.3	5.0	5.8	6.2	5.5	6.1	5.6	5.2	
340	4.2	4.8	5.7	5.5	4.6	5.3	5.6	5.1	5.5	5.2	4.8	
360	3.9	4.4	5.2	4.7	4.2	4.9	5.0	4.7	5.1	4.8	4.4	
380	3.6	4.0	4.7	4.1	3.9	4.5	4.4	4.4	4.6	4.4	4.1	
400	3.3	3.7	4.1	3.5	3.6	4.2	3.8	3.9	4.1	4.0	3.8	
420	3.1	3.4	3.6	3.0	3.3	3.9	3.2	3.7	3.5	3.7	3.5	
440	2.9	3.2	3.1	2.5	3.1	3.4	2.8	3.5	3.1	3.4	3.2	
460					2.8	3.0	2.3	3.2	2.7	3.0	2.9	
480					2.6	2.6	2.0	2.8	2.3	2.7	2.6	
500								2.5	2.0	2.3	2.3	
520								2.2	1.7	2.0	2.0	
540										1.7	1.7	
560										1.4	1.5	
580											1.2	
600											1.0	
Passagens decabo	4				3			3		3		3
Moitão	60t											
Modo telescópico	I	1	1	2	3	1	2	3	2	3	3	4
	II	2	3	3	3	3	3	3	3	3	3	4
	III	3	3	3	3	3	3	3	3	3	3	4
	IV	3	3	3	2	3	3	3	3	3	3	4
	V	3	3	2	2	3	3	2	3	3	3	4
	VI	3	2	2	2	3	2	2	3	2	3	4

MODO DE TRABALHO DA LANÇA PRINCIPAL

Unid.t

Patolas totalmente estendidas a 8,0m, contrapeso de 23t, operação traseira e lateral													
Raio (m)	Compr. da lança principal (m)												
	13,2*	17,4	17,4	17,4	17,4	17,4	21,6	21,6	21,6	21,6	21,6	21,6*	
30	100.0	40.5	66.0	72.0	72.0	72.0	29.5	44.0	65.0	68.0	68.0	68.0	
35	86.0	38.0	61.0	72.0	72.0	72.0	28.0	42.0	60.0	66.0	67.0	67.0	
40	80.0	36.0	56.5	71.0	71.0	71.0	26.0	40.0	55.0	65.0	66.0	66.0	
45	75.0	34.5	52.5	70.0	70.0	70.0	24.0	38.0	52.0	63.5	65.0	65.0	
50	68.0	33.0	49.0	65.0	66.0	66.0	23.0	36.0	49.0	60.0	63.0	63.0	
55	64.0	31.5	46.0	61.0	62.0	62.0	22.0	34.0	46.0	56.0	60.0	60.0	
60	58.0	30.0	43.0	57.5	59.0	59.0	21.0	31.5	43.0	53.0	57.0	57.0	
70	50.0	27.5	38.5	49.0	50.0	50.0	19.0	29.0	39.0	45.0	48.0	48.0	
80	43.5	25.5	35.0	42.0	42.5	42.0	17.0	26.5	36.0	40.0	41.0	41.0	
90	36.0	24.0	32.0	38.0	38.5	38.0	16.0	24.5	33.0	36.0	37.0	37.0	
100		22.5	29.5	35.0	34.5	34.0	15.0	22.5	30.0	33.0	33.5	33.0	
110		21.5	27.0	30.5	30.0	29.5	13.9	21.0	28.0	29.5	29.5	29.0	
120		20.3	25.5	26.0	25.5	25.0	13.0	19.5	26.0	26.0	25.0	24.5	
140							11.5	17.0	22.0	20.5	19.5	19.0	
160							10.4	15.0	17.0	16.0	15.0	14.5	
180													
200													
220													
240													
260													
280													
300													
320													
340													
360													
380													
400													
420													
440													
460													
480													
500													
Passagensdecabo	12	12					12						
Moitão	60t												
Modo telescópico	I	1	1	1	1	1	1	1	1	1	1	1	2
	II	1	1	1	1	1	2	1	1	1	1	2	2
	III	1	1	1	1	2	1	1	1	1	2	2	1
	IV	1	1	1	2	1	1	1	1	2	2	1	1
	V	1	1	2	1	1	1	1	2	2	1	1	1
	VI	1	2	1	1	1	1	3	2	1	1	1	1

Unid.t

Patolas totalmente estendidas a 8,0m, contrapeso de 23t, operação traseira e lateral													
Raio (m)	Compr. da lança principal (m)												
	25,8	25,8	25,8	25,8	25,8	25,8*	30,0	30,0	30,0	30,0	30,0	30,0*	
30													
35													
40	25.0	25.0	43.0	60.0	60.0	60.0							
45	23.5	23.5	41.0	56.0	60.0	60.0							
50	22.0	22.0	39.5	53.0	60.0	60.0	19.0	24.0	26.0	42.0	53.0	53.0	
55	21.0	21.0	38.0	50.0	58.0	58.0	18.5	23.0	24.5	40.5	51.5	51.5	
60	20.0	20.0	36.0	47.0	54.0	54.0	17.5	22.0	23.0	39.5	50.0	50.0	
70	18.0	18.0	33.0	42.0	46.0	46.0	15.8	20.0	21.0	36.0	48.0	48.0	
80	16.5	16.5	30.0	38.0	41.0	41.0	14.3	18.5	19.0	33.5	44.0	44.0	
90	15.0	15.0	28.0	35.0	37.0	37.0	13.0	17.0	17.5	31.0	40.0	38.0	
100	14.0	14.0	26.0	32.0	33.0	33.0	12.0	15.5	16.0	28.5	35.5	33.0	
110	13.0	13.0	24.5	30.0	29.0	29.0	11.0	14.5	15.0	27.0	30.0	29.0	
120	12.0	12.0	22.5	28.0	27.0	26.0	10.3	13.5	14.0	25.0	27.0	26.0	
140	10.5	10.5	20.0	21.0	20.5	19.5	9.0	11.9	12.2	22.0	21.5	20.5	
160	9.4	9.3	18.0	17.0	16.5	15.5	8.0	10.7	10.7	18.5	17.0	16.0	
180	8.5	8.4	15.5	13.5	13.0	12.0	7.1	9.6	9.6	15.2	14.0	13.0	
200	7.7	7.6	13.0	11.5	11.0	10.0	6.4	8.7	8.7	12.8	11.6	10.6	
220							5.8	8.0	7.9	11.0	9.8	8.8	
240							5.3	7.3	7.2	9.4	8.2	7.2	
260													
280													
300													
320													
340													
360													
380													
400													
420													
440													
460													
480													
500													
Passagensdecabo	11					9							
Moitão	60t												
Modo telescópico	I	1	1	1	1	1	2	1	1	1	1	2	
	II	1	1	1	1	2	2	1	1	1	1	2	2
	III	1	1	1	2	2	2	1	1	1	2	2	2
	IV	1	1	2	2	2	1	1	2	3	2	2	2
	V	2	3	2	2	1	1	3	3	2	2	2	1
	VI	3	2	2	1	1	1	3	2	2	2	1	1

MODO DE TRABALHO DA LANÇA PRINCIPAL

Unid.t

Patolas totalmente estendidas a 8,0m, contrapeso de 23t, operação traseira e lateral													
Raio (m)	Compr. da lança principal (m)												
	34,2	34,2	34,2	34,2	34,2	34,2*	38,4	38,4	38,4	38,4	38,4	38,4	38,4*
30													
35													
40													
45													
50													
55													
60	19,0	21,5	25,5	26,0	43,0	46,0							
70	17,0	19,0	23,0	23,5	40,5	44,0	17,0	20,0	21,5	26,0	30,5	41,5	
80	15,5	17,5	21,0	21,5	38,0	42,0	15,5	18,5	19,5	24,0	28,0	39,0	
90	14,5	16,0	19,5	19,5	35,0	39,0	14,0	17,0	18,0	22,0	25,5	36,0	
100	13,3	14,5	18,0	18,0	32,5	34,0	13,0	15,7	16,5	20,3	23,5	33,5	
110	12,3	13,5	16,5	16,5	30,5	31,5	12,0	14,5	15,2	18,8	22,0	31,5	
120	11,5	12,5	15,5	15,5	28,5	28,0	11,0	13,5	14,0	17,5	20,5	28,5	
140	10,1	10,8	13,5	13,5	22,5	21,5	9,5	11,7	12,2	15,4	17,7	22,0	
160	8,9	9,6	11,8	11,8	18,0	17,0	8,5	10,4	10,8	13,6	15,7	17,5	
180	8,0	8,5	10,5	10,5	15,0	14,0	7,5	9,3	9,6	12,1	14,0	14,5	
200	7,2	7,7	9,5	9,4	12,7	11,5	6,7	8,4	8,6	11,0	12,5	12,0	
220	6,5	6,9	8,6	8,5	10,7	9,5	6,0	7,6	7,7	10,0	10,5	10,0	
240	6,0	6,3	7,9	7,8	9,2	8,0	5,5	6,9	7,0	9,0	9,0	8,5	
260	5,5	5,7	7,2	7,1	8,0	6,7	5,0	6,3	6,3	8,0	7,7	7,2	
280	5,1	5,3	6,6	6,5	6,9	5,6	4,5	5,8	5,8	7,0	6,7	6,2	
300							4,2	5,3	5,3	6,0	5,7	5,2	
320							3,9	4,8	4,8	5,2	5,0	4,5	
340													
360													
380													
400													
420													
440													
460													
480													
500													
Passagensdecabo	8						7						
Moitão	60t												
Modo telescópico	I	1	1	1	1	1	2	1	1	1	1	1	2
	II	1	1	1	1	2	2	1	1	1	2	3	2
	III	1	1	2	3	2	2	1	2	3	3	2	2
	IV	2	3	3	2	2	2	3	3	3	2	2	2
	V	3	3	2	2	2	2	3	3	2	2	2	2
	VI	3	2	2	2	2	1	3	2	2	2	2	2

Unid.t

Patolas totalmente estendidas a 8,0m, contrapeso de 23t, operação traseira e lateral													
Raio (m)	Compr. da lança principal (m)												
	42,6	42,6	42,6	42,6	42,6	42,6*	46,8	46,8	46,8	46,8	46,8	46,8*	
30													
35													
40													
45													
50													
55													
60													
70													
80	16,5	18,0	21,5	26,0	30,0	32,5							
90	15,0	16,5	20,0	24,0	28,0	30,0							
100	14,0	15,0	18,5	22,0	26,0	28,0	14,0	16,5	19,5	23,0	25,0		
110	12,9	14,0	17,0	20,3	24,0	26,0	12,8	15,3	18,0	21,3	23,5		
120	12,0	12,9	15,8	18,8	22,3	24,0	11,9	14,2	16,8	19,8	22,0		
140	10,4	11,0	13,8	16,3	19,5	21,0	10,3	12,3	14,6	17,4	19,0		
160	9,2	9,8	12,2	14,4	17,3	17,5	9,0	10,9	13,0	15,4	16,7		
180	8,2	8,6	10,8	12,7	14,5	14,0	8,0	9,6	11,5	13,6	13,5		
200	7,3	7,7	9,7	11,3	12,0	11,7	7,1	8,6	10,2	12,2	11,0		
220	6,6	6,9	8,7	10,2	10,2	9,7	6,4	7,7	9,2	9,8	9,6		
240	6,0	6,2	7,9	9,0	8,6	8,1	5,7	7,0	8,3	8,5	8,1		
260	5,5	5,6	7,2	7,7	7,3	6,9	5,2	6,4	7,5	7,4	6,9		
280	5,0	5,1	6,6	6,8	6,2	5,8	4,7	5,8	6,8	6,3	5,8		
300	4,6	4,7	6,0	5,9	5,3	4,9	4,3	5,3	6,0	5,4	4,9		
320	4,3	4,3	5,2	5,0	4,4	4,0	4,0	4,9	5,2	4,5	4,0		
340	4,0	3,9	4,6	4,4	3,8	3,4	3,6	4,5	4,5	3,8	3,3		
360	3,7	3,6	4,0	3,8	3,2	2,8	3,3	4,1	4,0	3,3	2,7		
380							3,0	3,8	3,5	2,8	2,2		
400							2,8	3,3	3,0	2,3	1,7		
420													
440													
460													
480													
500													
Passagensdecabo	6						5						
Moitão	60t												
Modo telescópico	I	1	1	1	1	2	3	1	1	1	2	3	
	II	1	1	2	3	3	2	1	2	3	3	3	
	III	2	3	3	3	2	2	3	3	3	3	2	
	IV	3	3	3	2	2	2	3	3	3	2	2	
	V	3	3	2	2	2	2	3	3	2	2	2	
	VI	3	2	2	2	2	2	3	2	2	2	2	

MODO DE TRABALHO DA LANÇA PRINCIPAL

Unid.t

Patolas totalmente estendidas a 8,0m, contrapeso de 23t, operação lateral e traseira											
Raio (m)	Compr. da lança principal (m)										
	51.0	51.0	51.0	51.0*	55.2	55.2	55.2*	59.4	59.4*	63.6*	70.0*
30											
35											
40											
45											
50											
55											
60											
70											
80											
90											
100											
110	13.5	15.5	18.0	20.0							
120	13.0	14.5	17.0	19.5	13.0	14.0	15.5				
140	11.3	13.0	15.5	17.5	11.5	13.0	14.5	11.0	12.0		
160	10.0	11.5	13.8	15.4	10.5	12.0	13.5	10.5	11.5	9.5	
180	9.0	10.4	12.4	13.6	9.5	11.0	12.5	9.6	11.0	9.2	7.0
200	8.0	9.3	11.0	11.8	8.5	9.8	11.2	9.0	10.2	9.0	7.0
220	7.2	8.4	10.0	9.8	7.8	9.0	10.2	8.2	9.3	8.4	6.8
240	6.5	7.6	9.0	8.3	7.0	8.2	8.5	7.5	8.5	7.8	6.5
260	6.0	6.9	7.5	7.0	6.4	7.6	7.2	6.9	7.5	7.2	6.2
280	5.5	6.3	6.5	6.0	5.9	6.9	6.2	6.4	6.3	6.6	5.9
300	5.0	5.7	5.7	5.0	5.4	5.9	5.3	5.9	5.6	6.0	5.6
320	4.5	5.2	4.8	4.2	5.0	5.1	4.5	5.5	4.8	5.0	5.2
340	4.2	4.8	4.1	3.5	4.6	4.4	3.8	4.7	4.1	4.4	4.5
360	4.9	4.1	3.5	2.9	4.2	3.7	3.1	4.1	3.5	3.8	3.9
380	3.6	3.6	2.9	2.3	3.9	3.2	2.6	3.5	2.9	3.2	3.3
400	3.3	3.2	2.5	1.9	3.4	2.7	2.1	3.0	2.4	2.8	2.9
420	3.1	2.8	2.1	1.5	3.0	2.3	1.7	2.6	2.0	2.4	2.5
440	2.7	2.4	1.7	1.1	2.6	1.9	1.3	2.2	1.6	2.0	2.1
460					2.3	1.6	1.0	1.9	1.3	1.6	1.7
480								1.6	1.0	1.3	1.4
500										1.0	1.1
Passagens decabo	4				3			3		3	
Moitão	60t										
Modo telescópico	I	1	1	2	3	1	2	3	2	3	4
	II	2	3	3	3	3	3	3	3	3	4
	III	3	3	3	3	3	3	3	3	3	4
	IV	3	3	3	2	3	3	3	3	3	4
	V	3	3	2	2	3	3	2	3	3	4
	VI	3	2	2	2	3	2	2	3	2	3

MODO DE TRABALHO DOS JIBS

Unid.t

Ângulo dalaça principal (°)	Lança principal + extensão (m)					Lança principal + jibs (m)						Lança principal + extensão + jibs (m)				
	Patolas totalmente estendidas, operação lateral e traseira, contrapeso de 34t															
	63.6 + 9.5	70 + 9.5	63.6+10.4			63.6+17.5		70+10.4		70+17.5		63.6+ 9.5 +17.5	63.6+ 9.5+7 +17.5			
0°	0°	0°	15°	30°	0°	15°	30°	0°	15°	30°	0°	15°	30°	0°	0°	
80	6.0	4.5	5.5	5.0	4.5	4.0	3.0	2.3	4.5	4.0	3.5	3.0	2.5	2.0	2.0	1.5
78	5.7	4.5	5.5	5.0	4.3	4.0	3.0	2.3	4.5	4.0	3.5	3.0	2.5	2.0	2.0	1.5
76	5.5	4.5	5.3	4.8	4.1	3.7	2.8	2.3	4.2	3.8	3.5	3.0	2.5	2.0	2.0	1.5
74	5.2	4.5	5.0	4.5	3.9	3.5	2.6	2.2	3.9	3.6	3.3	3.0	2.3	2.0	2.0	1.5
72	5.0	4.3	4.5	4.0	3.7	3.3	2.6	2.2	3.6	3.4	3.1	2.8	2.3	1.9	2.0	1.4
70	4.8	4.1	4.0	3.7	3.5	3.1	2.4	2.0	3.3	3.1	2.9	2.6	2.2	1.9	1.9	1.3
68	4.5	3.8	3.7	3.4	3.3	2.9	2.4	2.0	3.0	2.8	2.7	2.4	2.1	1.8	1.8	1.2
66	4.2	3.5	3.5	3.2	3.1	2.7	2.2	2.0	2.7	2.6	2.5	2.2	2.0	1.8	1.7	1.1
64	3.9	3.2	3.3	3.1	3.0	2.7	2.2	2.0	2.5	2.4	2.3	2.0	1.9	1.7	1.6	1.0
62	3.6	2.9	3.1	2.9	2.8	2.5	2.0	1.8	2.3	2.2	2.1	1.9	1.7	1.6	1.5	0.9
60	3.3	2.7	2.9	2.7	2.6	2.3	2.0	1.8	2.1	2.0	1.9	1.8	1.6	1.5	1.4	0.8
58	3.1	2.5	2.7	2.5	2.4	2.1	2.0	1.8	1.9	1.8	1.7	1.6	1.5	1.4	1.3	
56	2.9	2.2	2.5	2.3	2.2	1.9	1.8	1.7	1.7	1.6	1.5	1.4	1.3	1.2	1.2	
54	2.7	2.0	2.3	2.1	2.0	1.7	1.6	1.5	1.6	1.5	1.4	1.2	1.1	1.0	1.1	
52	2.5	1.8	2.1	1.9	1.8	1.7	1.6	1.5	1.4	1.3	1.2	1.1	1.0	0.9	1.0	
50	2.3	1.7	1.9	1.8	1.7	1.5	1.4	1.3	1.2	1.1	1.0	1.0				
48	2.2	1.5	1.7	1.6	1.5	1.5	1.4	1.3	1.0							
46	2.0	1.4	1.6	1.5	1.4	1.3	1.2	1.1								
44	1.8	1.2	1.4	1.3	1.2	1.2	1.1	1.0								
42	1.7	1.0	1.2	1.1	1.0	1.0										
40	1.5		1.0													
Passagens decabo	1															
Moitão	6.5t															

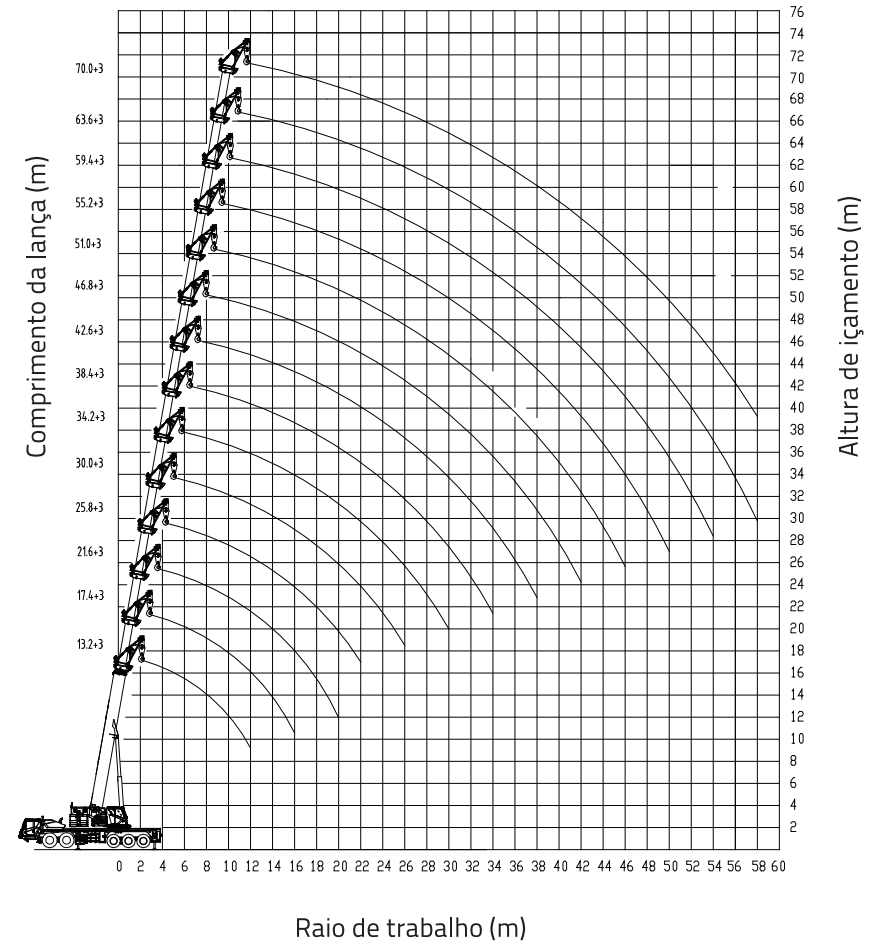
MODO DE TRABALHO DOS JIBS

Unid.t

Ângulo dalaça principal (°)	Lança principal + extensão (m)					Lança principal + jibs (m)						Lança principal + extensão + jibs (m)				
	Patolas totalmente estendidas, operação lateral e traseira, contrapeso de 23t												63.6+9.5+17.5	63.6+9.5+7+17.5		
	63.6+9.5	70+9.5	63.6+10.4		63.6+17.5		70+10.4		70+17.5		0°	0°				
0°	0°	0°	15°	30°	0°	15°	30°	0°	15°	30°	0°	15°	30°	0°	0°	
80	6.0	4.5	5.5	5.0	4.5	4.0	3.0	2.3	4.5	4.0	3.5	3.0	2.5	2.0	2.0	1.5
78	5.7	4.5	5.5	5.0	4.3	4.0	3.0	2.3	4.5	4.0	3.5	3.0	2.5	2.0	2.0	1.5
76	5.5	4.5	5.3	4.8	4.1	3.7	2.8	2.3	4.2	3.8	3.5	3.0	2.5	2.0	2.0	1.5
74	5,2	4,5	5,0	4,5	3,9	3,5	2,6	2,2	3,9	3,6	3,3	3,0	2,3	2,0	2,0	1,5
72	5.0	4.3	4.5	4.0	3.7	3.3	2.6	2.2	3.6	3.4	3.1	2.8	2.3	1.9	2.0	1.4
70	4.8	4.1	4.0	3.7	3.5	3.1	2.4	2.0	3.3	3.1	2.9	2.6	2.2	1.9	1.9	1.3
68	4.5	3.8	3.7	3.4	3.3	2.9	2.4	2.0	3.0	2.8	2.7	2.4	2.1	1.8	1.8	1.2
66	4.2	3.5	3.5	3.2	3.1	2.7	2.2	2.0	2.7	2.6	2.5	2.2	2.0	1.8	1.7	1.1
64	3.8	2.9	3.3	3.1	3.0	2.7	2.2	2.0	2.5	2.4	2.3	2.0	1.9	1.7	1.6	1.0
62	3.4	2.5	2.9	2.8	2.8	2.5	2.0	1.8	2.0	1.9	1.9	1.8	1.7	1.6	1.5	0.9
60	3.0	2.2	2.5	2.4	2.3	2.2	2.0	1.8	1.7	1.6	1.6	1.5	1.4	1.3	1.4	
58	2.6	1.9	2.2	2.1	2.0	1.9	1.7	1.6	1.4	1.3	1.3	1.2	1.1	1.0	1.1	
56	2.3	1.6	1.9	1.8	1.7	1.6	1.5	1.4	1.1			0.9			0.9	
54	2.0	1.3	1.6	1.5	1.4	1.3	1.2	1.2								
52	1.7	1.0	1.3	1.2	1.1	1.1										
50	1.5		1.0													
Passagensdecabo	1															
Moitão	6.5t															

Curva de Altura de Içamento

Jib de Montagem



MODO DE TRABALHO DO JIB DE MONTAGEM

Unid.t

Patolas totalmente estendidas a 8,0m, 34t de contrapeso, operação traseira e lateral													
Raio (m)	Jib de montagem de 3,0m, angulação do jib 30°												
	13,2*	17,4	17,4	17,4	17,4	17,4*	21,6	21,6	21,6	21,6	21,6	21,6	21,6*
30	18,0												
35	16,0	16,0	16,0	16,0	16,0	16,0							
40	16,0	16,0	16,0	16,0	16,0	16,0							
45	16,0	16,0	16,0	16,0	16,0	16,0	16,0	16,0	16,0	16,0	16,0	16,0	16,0
50	16,0	16,0	16,0	16,0	16,0	16,0	16,0	16,0	16,0	16,0	16,0	16,0	16,0
55	16,0	16,0	16,0	16,0	16,0	16,0	16,0	16,0	16,0	16,0	16,0	16,0	16,0
60	16,0	16,0	16,0	16,0	16,0	16,0	16,0	16,0	16,0	16,0	16,0	16,0	16,0
70	16,0	16,0	16,0	16,0	16,0	16,0	16,0	16,0	16,0	16,0	16,0	16,0	16,0
80	15,5	16,0	16,0	16,0	16,0	16,0	16,0	16,0	16,0	16,0	16,0	16,0	16,0
90	15,0	16,0	16,0	16,0	16,0	16,0	15,0	16,0	16,0	16,0	16,0	16,0	16,0
100	14,5	15,5	15,5	15,5	15,5	15,5	14,0	16,0	16,0	16,0	16,0	16,0	16,0
110	14,0	15,0	15,0	15,0	15,0	15,0	13,0	16,0	16,0	16,0	16,0	16,0	16,0
120	13,5	14,5	14,5	14,5	14,5	14,5	12,0	16,0	16,0	16,0	16,0	16,0	16,0
140		14,0	14,0	14,0	14,0	14,0	11,0	14,5	15,5	15,5	15,5	15,5	15,5
160		13,5	13,5	13,5	13,5	13,5	10,0	13,0	15,0	15,0	15,0	15,0	15,0
180							9,0	12,0	14,0	14,0	14,0	14,0	14,0
200							8,0	11,0	13,0	13,0	13,0	13,0	13,0
220													
240													
260													
280													
300													
320													
340													
360													
380													
400													
420													
440													
460													
480													
500													
Passagensdecabo	3												
Moitão	18t												
Modo telescópico	I	1	1	1	1	1	1	1	1	1	1	1	2
	II	1	1	1	1	1	2	1	1	1	1	2	2
	III	1	1	1	1	2	1	1	1	1	2	2	1
	IV	1	1	1	2	1	1	1	1	2	2	1	1
	V	1	1	2	1	1	1	1	2	2	1	1	1
	VI	1	2	1	1	1	1	3	2	1	1	1	1

Unid.t

Patolas totalmente estendidas a 8,0m, 34t de contrapeso, operação traseira e lateral													
Raio (m)	Jib de montagem de 3,0m, angulação do jib 30°												
	25,8	25,8	25,8	25,8	25,8	25,8*	30,0	30,0	30,0	30,0	30,0	30,0	30,0*
30													
35													
40													
45													
50													
55	16,0	16,0	16,0	16,0	16,0	16,0							
60	15,0	15,0	16,0	16,0	16,0	16,0							
70	14,0	14,0	16,0	16,0	16,0	16,0	13,5	16,0	16,0	16,0	16,0	16,0	16,0
80	13,0	13,0	16,0	16,0	16,0	16,0	12,2	15,0	16,0	16,0	16,0	16,0	16,0
90	12,0	12,0	16,0	16,0	16,0	16,0	11,2	14,0	15,0	16,0	16,0	16,0	16,0
100	11,0	11,0	16,0	16,0	16,0	16,0	10,2	13,0	14,0	16,0	16,0	16,0	16,0
110	10,5	10,5	16,0	16,0	16,0	16,0	9,5	12,0	13,0	16,0	16,0	16,0	16,0
120	10,0	10,0	16,0	16,0	16,0	16,0	9,0	11,0	12,0	16,0	16,0	16,0	16,0
140	9,0	9,0	16,0	16,0	16,0	16,0	8,0	10,0	10,5	16,0	16,0	16,0	16,0
160	8,0	8,0	15,0	15,5	15,5	16,0	7,0	9,0	9,5	16,0	16,0	16,0	16,0
180	7,0	7,0	13,5	15,0	15,0	15,5	6,0	8,0	8,5	14,5	16,0	15,0	15,0
200	6,5	6,5	12,5	14,5	14,0	13,0	5,5	7,3	7,5	13,5	14,0	13,0	13,0
220	6,0	6,0	11,5	12,5	12,0	10,5	5,0	6,6	6,8	12,5	12,0	11,5	11,5
240							4,5	6,0	6,2	11,8	11,0	10,5	10,5
260							4,2	5,6	5,8	10,0	9,5	9,0	9,0
280													
300													
320													
340													
360													
380													
400													
420													
440													
460													
480													
500													
Passagensdecabo	3												
Moitão	18t												
Modo telescópico	I	1	1	1	1	1	2	1	1	1	1	1	2
	II	1	1	1	1	2	2	1	1	1	1	2	2
	III	1	1	1	2	2	2	1	1	1	2	2	2
	IV	1	1	2	2	2	1	1	2	3	2	2	2
	V	2	3	2	2	1	1	3	3	2	2	2	1
	VI	3	2	2	1	1	1	3	2	2	2	1	1

MODO DE TRABALHO DO JIB DE MONTAGEM

Unid.t

Patolas totalmente estendidas a 8,0m, 34t de contrapeso, operação traseira e lateral													
Raio (m)	Jib de montagem de 3,0m, angulação do jib 30°												
	34,2	34,2	34,2	34,2	34,2	34,2*	38,4	38,4	38,4	38,4	38,4	38,4	38,4*
30													
35													
40													
45													
50													
55													
60													
70													
80	12,5	14,0	16,0	16,0	16,0	16,0							
90	11,5	13,0	16,0	16,0	16,0	16,0	12,0	14,0	16,0	16,0	16,0	16,0	16,0
100	10,5	12,0	15,0	15,0	16,0	16,0	11,0	13,0	15,0	16,0	16,0	16,0	16,0
110	10,0	11,0	14,0	14,0	16,0	16,0	10,0	12,0	14,0	16,0	16,0	16,0	16,0
120	9,5	10,0	13,0	13,0	16,0	16,0	9,5	11,5	13,0	15,5	16,0	16,0	16,0
140	8,5	9,0	12,0	12,0	15,0	16,0	8,1	10,0	11,0	14,0	15,0	15,5	15,5
160	7,5	8,0	10,5	10,5	14,0	15,0	7,2	9,0	10,0	12,5	14,5	15,0	15,0
180	6,5	7,0	9,5	9,5	13,5	14,5	6,3	8,0	8,8	11,0	13,0	14,5	14,5
200	6,0	6,5	8,5	8,5	13,0	14,0	5,7	7,0	7,8	10,0	11,8	14,0	14,0
220	5,5	5,8	7,7	7,7	12,5	12,0	5,1	6,5	7,0	9,0	10,5	12,5	12,5
240	5,0	5,3	7,0	7,0	11,5	10,5	4,6	6,0	6,4	8,0	9,5	11,2	11,2
260	4,5	4,8	6,5	6,5	10,5	9,5	4,2	5,5	5,8	7,5	8,8	10,2	10,2
280	4,2	4,5	6,0	6,0	9,0	8,0	3,8	5,1	5,3	7,0	8,0	8,8	8,8
300	3,9	4,2	5,5	5,5	8,0	7,0	3,5	4,7	4,8	6,5	7,3	7,7	7,7
320							3,2	4,3	4,4	6,0	6,7	6,7	6,7
340							3,0	3,9	4,1	5,5	6,2	5,9	5,9
360													
380													
400													
420													
440													
460													
480													
500													
Passagensdecabo	3												
Moitão	18t												
Modo telescópico	I	1	1	1	1	1	2	1	1	1	1	1	2
	II	1	1	1	1	2	2	1	1	1	2	3	2
	III	1	1	2	3	2	2	1	2	3	3	2	2
	IV	2	3	3	2	2	2	3	3	3	2	2	2
	V	3	3	2	2	2	2	3	3	2	2	2	2
	VI	3	2	2	2	2	1	3	2	2	2	2	2

Unid.t

Patolas totalmente estendidas a 8,0m, 34t de contrapeso, operação traseira e lateral													
Raio (m)	Jib de montagem de 3,0m, angulação do jib 30°												
	42,6	42,6	42,6	42,6	42,6	42,6*	46,8	46,8	46,8	46,8	46,8	46,8	46,8*
30													
35													
40													
45													
50													
55													
60													
70													
80													
90													
100													
110	10,5	12,0	14,0	16,0	16,0	16,0	10,5	12,0	14,0	16,0	16,0	16,0	16,0
120	10,0	11,0	13,0	15,0	15,0	15,0	9,5	11,0	13,0	16,0	16,0	16,0	16,0
140	9,0	9,5	11,5	13,5	14,5	14,5	9,0	10,5	12,5	15,0	15,0	15,0	15,0
160	8,0	8,5	10,0	12,5	14,0	14,0	8,0	9,5	11,5	13,5	14,5	14,5	14,5
180	7,1	7,7	9,1	11,5	13,0	13,5	7,0	8,5	10,0	12,0	13,0	13,0	13,0
200	6,4	7,1	8,4	10,5	12,5	13,0	6,5	7,8	9,0	11,0	12,0	12,0	12,0
220	5,8	6,3	7,6	9,5	11,0	11,5	5,7	7,0	8,5	10,0	11,0	11,0	11,0
240	5,2	5,7	7,0	8,5	10,0	10,5	5,2	6,4	7,4	9,0	9,8	9,8	9,8
260	4,8	5,2	6,4	7,7	9,5	9,5	4,8	5,8	6,8	8,3	9,0	9,0	9,0
280	4,4	4,7	5,9	7,0	8,5	8,5	4,4	5,3	6,3	7,6	8,2	8,2	8,2
300	4,1	4,3	5,3	6,5	7,5	7,2	4,0	4,8	5,8	7,0	7,2	7,2	7,2
320	3,8	3,8	4,8	6,0	6,5	6,2	3,6	4,4	5,3	6,3	6,3	6,3	6,3
340	3,5	3,5	4,5	5,5	5,8	5,5	3,3	4,0	4,8	5,8	5,5	5,5	5,5
360	3,2	3,2	4,2	5,0	5,0	4,7	3,0	3,7	4,4	5,2	4,7	4,7	4,7
380	3,0	3,0	3,9	4,6	4,4	4,1	2,7	3,4	4,0	4,5	4,0	4,0	4,0
400							2,5	3,1	3,7	3,9	3,4	3,4	3,4
420							2,3	2,9	3,4	3,4	2,9	2,9	2,9
440													
460													
480													
500													
Passagensdecabo	3												
Moitão	18t												
Modo telescópico	I	1	1	1	1	2	3	1	1	1	2	3	3
	II	1	1	2	3	3	2	1	2	3	3	3	3
	III	2	3	3	3	2	2	3	3	3	3	3	2
	IV	3	3	3	2	2	2	3	3	3	2	2	2
	V	3	3	2	2	2	2	3	3	2	2	2	2
	VI	3	2	2	2	2	2	3	2	2	2	2	2

MODO DE TRABALHO DO JIB DE MONTAGEM

Unidt

Patolas totalmente estendidas a 8,0m, 34t de contrapeso, operação traseira e lateral												
Raio (m)	Jib de montagem de 3,0m, angulação do jib 30°											
	51,0	51,0	51,0	51,0*	55,2	55,2	55,2*	59,4	59,4*	63,6*	70,0*	
40												
45												
50												
55												
60												
70												
80												
90												
100												
110												
120												
140	9,5	11,0	12,5	14,0	9,5	11,0	12,0					
160	8,5	10,0	11,5	13,0	8,7	10,0	11,0	9,0	10,0			
180	7,5	9,0	10,5	12,0	8,1	9,3	10,0	8,5	9,5	7,8		
200	7,0	8,2	9,5	11,0	7,5	8,6	9,4	8,0	8,8	7,5	6,5	
220	6,5	7,5	8,7	10,0	6,9	8,0	8,8	7,5	8,2	7,2	6,2	
240	5,7	6,9	8,0	9,0	6,3	7,4	8,2	6,8	7,5	6,9	6,0	
260	5,2	6,3	7,4	8,4	5,8	6,8	7,6	6,2	6,9	6,4	5,7	
280	4,8	5,7	6,8	7,5	5,3	6,2	7,0	5,7	6,4	5,9	5,3	
300	4,4	5,3	6,3	6,8	4,8	5,7	6,4	5,3	5,9	5,4	4,9	
320	4,1	4,8	5,8	6,3	4,4	5,3	5,8	4,9	5,4	5,0	4,5	
340	3,8	4,4	5,3	5,6	4,1	4,9	5,3	4,5	5,0	4,6	4,2	
360	3,5	4,0	4,8	4,8	3,8	4,5	4,8	4,1	4,6	4,2	3,9	
380	3,2	3,7	4,3	4,2	3,5	4,1	4,4	3,8	4,2	3,9	3,6	
400	2,9	3,4	3,9	3,6	3,2	3,7	3,8	3,5	3,9	3,6	3,3	
420	2,6	3,1	3,5	3,0	2,9	3,4	3,3	3,2	3,5	3,3	3,0	
440	2,4	2,8	3,1	2,6	2,7	3,1	2,8	3,0	3,1	3,1	2,7	
460	2,2	2,5	2,7	2,1	2,4	2,9	2,3	2,8	2,7	2,9	2,4	
480					2,2	2,6	1,9	2,6	2,3	2,6	2,2	
500					2,0	2,2	1,5	2,4	1,9	2,2	2,0	
520								2,2	1,6	1,8	1,8	
540								1,9	1,3	1,5	1,6	
560										1,2	1,4	
580				3				5	1,0	1,1		
Passagens decabo												
Moitão												
Modo telescópico	I	1	1	2	3	1	Jib	3	2	3	3	4
	II	2	3	3	3	3	3	3	3	3	3	4
	III	3	3	3	3	3	3	3	3	3	3	4
	IV	3	3	3	2	3	3	3	3	3	3	4
	V	3	3	2	2	3	3	2	3	3	3	4
	VI	3	2	2	2	3	2	2	3	2	3	4

Unidt

Patolas totalmente estendidas a 8,0m, 23t de contrapeso, operação traseira e lateral												
Raio (m)	Jib de montagem de 3,0m, angulação do jib 30°											
	13,2*	17,4	17,4	17,4	17,4	17,4*	21,6	21,6	21,6	21,6	21,6	21,6*
30	18,0											
35	16,0	16,0	16,0	16,0	16,0	16,0						
40	16,0	16,0	16,0	16,0	16,0	16,0						
45	16,0	16,0	16,0	16,0	16,0	16,0	16,0	16,0	16,0	16,0	16,0	16,0
50	16,0	16,0	16,0	16,0	16,0	16,0	16,0	16,0	16,0	16,0	16,0	16,0
55	16,0	16,0	16,0	16,0	16,0	16,0	16,0	16,0	16,0	16,0	16,0	16,0
60	16,0	16,0	16,0	16,0	16,0	16,0	16,0	16,0	16,0	16,0	16,0	16,0
70	16,0	16,0	16,0	16,0	16,0	16,0	16,0	16,0	16,0	16,0	16,0	16,0
80	15,5	16,0	16,0	16,0	16,0	16,0	16,0	16,0	16,0	16,0	16,0	16,0
90	15,0	16,0	16,0	16,0	16,0	16,0	15,0	16,0	16,0	16,0	16,0	16,0
100	14,5	15,5	15,5	15,5	15,5	15,5	14,0	16,0	16,0	16,0	16,0	16,0
110	14,0	15,0	15,0	15,0	15,0	15,0	13,0	16,0	16,0	16,0	16,0	16,0
120	13,5	14,5	14,5	14,5	14,5	14,5	12,0	16,0	16,0	16,0	16,0	16,0
140		14,0	14,0	14,0	14,0	14,0	11,0	14,5	15,5	15,5	15,5	15,5
160		13,5	13,5	13,5	13,5	13,5	10,0	13,0	15,0	15,0	15,0	15,0
180							9,0	12,0	14,0	14,0	13,5	12,5
200							8,0	11,0	12,5	12,0	11,0	10,0
220												
240												
260												
280												
300												
320												
340												
360												
380												
400												
420												
440												
460												
480												
500												
Passagens decabo												
Moitão												
Modo telescópico	I	1	1	1	1	1	1	1	1	1	1	2
	II	1	1	1	1	1	2	1	1	1	1	2
	III	1	1	1	1	2	1	1	1	1	2	1
	IV	1	1	1	2	1	1	1	1	2	2	1
	V	1	1	2	1	1	1	1	2	2	1	1
	VI	1	2	1	1	1	1	3	2	1	1	1

MODO DE TRABALHO DO JIB DE MONTAGEM

Unidt

Patolas totalmente estendidas a 8,0m, 23t de contrapeso, operação traseira e lateral													
Raio (m)	Jib de montagem de 3,0m, angulação do jib 30°												
	25,8	25,8	25,8	25,8	25,8	25,8*	30,0	30,0	30,0	30,0	30,0	30,0	30,0*
30													
35													
40													
45													
50													
55	16,0	16,0	16,0	16,0	16,0	16,0							
60	15,0	15,0	16,0	16,0	16,0	16,0							
70	14,0	14,0	16,0	16,0	16,0	16,0	13,5	16,0	16,0	16,0	16,0	16,0	16,0
80	13,0	13,0	16,0	16,0	16,0	16,0	12,2	15,0	16,0	16,0	16,0	16,0	16,0
90	12,0	12,0	16,0	16,0	16,0	16,0	11,2	14,0	15,0	16,0	16,0	16,0	16,0
100	11,0	11,0	16,0	16,0	16,0	16,0	10,2	13,0	14,0	16,0	16,0	16,0	16,0
110	10,5	10,5	16,0	16,0	16,0	16,0	9,5	12,0	13,0	16,0	16,0	16,0	16,0
120	10,0	10,0	16,0	16,0	16,0	16,0	9,0	11,0	12,0	16,0	16,0	16,0	16,0
140	9,0	9,0	16,0	16,0	16,0	16,0	8,0	10,0	10,5	16,0	16,0	16,0	16,0
160	8,0	8,0	15,0	15,5	15,5	15,0	7,0	9,0	9,5	16,0	16,0	16,0	16,0
180	7,0	7,0	13,5	14,5	14,5	13,5	6,0	8,0	8,5	14,5	15,0	14,0	14,0
200	6,5	6,5	12,5	12,5	12,0	11,0	5,5	7,3	7,5	13,5	12,5	11,5	11,5
220	6,0	6,0	11,0	10,5	10,0	9,0	5,0	6,6	6,8	11,5	10,5	9,5	9,5
240							4,5	6,0	6,2	9,8	9,0	7,8	7,8
260							4,2	5,6	5,8	8,5	7,5	6,5	6,5
280													
300													
320													
340													
360													
380													
400													
420													
440													
460													
480													
500													
Passagensdecabo	3												
Moitão	18t												
Modo telescópico	I	1	1	1	1	1	2	1	1	1	1	1	2
	II	1	1	1	1	2	2	1	1	1	1	2	2
	III	1	1	1	2	2	2	1	1	1	2	2	2
	IV	1	1	2	2	2	1	1	2	3	2	2	2
	V	2	3	2	2	1	1	3	3	2	2	2	1
	VI	3	2	2	1	1	1	3	2	2	2	1	1

Unidt

Patolas totalmente estendidas a 8,0m, 23t de contrapeso, operação traseira e lateral													
Raio (m)	Jib de montagem de 3,0m, angulação do jib 30°												
	34,2	34,2	34,2	34,2	34,2	34,2*	38,4	38,4	38,4	38,4	38,4	38,4	38,4*
30													
35													
40													
45													
50													
55													
60													
70													
80	12,5	14,0	16,0	16,0	16,0	16,0							
90	11,5	13,0	16,0	16,0	16,0	16,0	12,0	14,0	16,0	16,0	16,0	16,0	16,0
100	10,5	12,0	15,0	15,0	16,0	16,0	11,0	13,0	15,0	16,0	16,0	16,0	16,0
110	10,0	11,0	14,0	14,0	16,0	16,0	10,0	12,0	14,0	16,0	16,0	16,0	16,0
120	9,5	10,0	13,0	13,0	16,0	16,0	9,5	11,5	13,0	15,5	16,0	16,0	16,0
140	8,5	9,0	12,0	12,0	15,0	16,0	8,1	10,0	11,0	14,0	15,0	15,5	15,5
160	7,5	8,0	10,5	10,5	14,0	15,0	7,2	9,0	10,0	12,5	14,5	15,0	15,0
180	6,5	7,0	9,5	9,5	13,5	14,5	6,3	8,0	8,8	11,0	13,0	14,5	14,5
200	6,0	6,5	8,5	8,5	13,0	12,0	5,7	7,0	7,8	10,0	11,8	12,5	12,5
220	5,5	5,8	7,7	7,7	11,0	10,0	5,1	6,5	7,0	9,0	10,5	10,5	10,5
240	5,0	5,3	7,0	7,0	9,5	8,5	4,6	6,0	6,4	8,0	9,2	9,0	9,0
260	4,5	4,8	6,5	6,5	8,0	7,0	4,2	5,5	5,8	7,5	8,0	7,8	7,8
280	4,2	4,5	6,0	6,0	7,0	6,0	3,8	5,1	5,3	7,0	7,0	6,5	6,5
300	3,9	4,2	5,5	5,5	6,0	5,0	3,5	4,7	4,8	6,0	6,0	5,6	5,6
320							3,2	4,3	4,4	5,3	5,2	4,8	4,8
340							3,0	3,9	4,1	4,6	4,5	4,1	4,1
360													
380													
400													
420													
440													
460													
480													
500													
Passagensdecabo	3												
Moitão	18t												
Modo telescópico	I	1	1	1	1	1	2	1	1	1	1	1	2
	II	1	1	1	1	2	2	1	1	1	1	2	2
	III	1	1	2	3	2	2	1	2	3	3	2	2
	IV	2	3	3	2	2	2	3	3	3	2	2	2
	V	3	3	2	2	2	2	3	3	2	2	2	2
	VI	3	2	2	2	2	1	3	2	2	2	2	2

MODO DE TRABALHO DO JIB DE MONTAGEM

Unidt

Patolas totalmente estendidas a 8,0m, 23t de contrapeso, operação traseira e lateral												
Raio (m)	Jib de montagem de 3,0m, angulação do jib 30°											
	42.6	42.6	42.6	42.6	42.6	42.6*	46.8	46.8	46.8	46.8	46.8*	
30												
35												
40												
45												
50												
55												
60												
70												
80												
90												
100												
110	10.5	12.0	14.0	16.0	16.0	16.0	10.5	12.0	14.0	16.0	16.0	
120	10.0	11.0	13.0	15.0	15.0	15.0	9.5	11.0	13.0	16.0	16.0	
140	9.0	9.5	11.5	13.5	14.5	14.5	9.0	10.5	12.5	15.0	15.0	
160	8.0	8.5	10.0	12.5	14.0	14.0	8.0	9.5	11.5	13.5	14.5	
180	7.1	7.7	9.1	11.5	13.0	13.5	7.0	8.5	10.0	12.0	13.0	
200	6.4	7.1	8.4	10.5	12.5	12.0	6.5	7.8	9.0	11.0	12.0	
220	5.8	6.3	7.6	9.5	10.5	10.0	5.7	7.0	8.5	10.0	10.0	
240	5.2	5.7	7.0	8.5	9.0	8.5	5.2	6.4	7.4	9.0	8.5	
260	4.8	5.2	6.4	7.7	7.7	7.2	4.8	5.8	6.8	7.6	7.1	
280	4.4	4.7	5.9	6.9	6.5	6.0	4.4	5.3	6.3	6.5	6.0	
300	4.1	4.3	5.3	6.0	5.5	5.0	4.0	4.8	5.8	5.6	5.1	
320	3.8	3.8	4.8	5.2	4.7	4.2	3.6	4.4	5.3	4.7	4.2	
340	3.5	3.5	4.5	4.5	4.0	3.5	3.3	4.0	4.6	4.0	3.5	
360	3.2	3.2	4.0	3.8	3.3	2.9	3.0	3.7	4.0	3.4	2.9	
380	3.0	3.0	3.5	3.3	2.8	2.4	2.7	3.4	3.4	2.8	2.3	
400							2.5	3.1	2.9	2.3	1.8	
420							2.3	2.8	2.5	1.9	1.4	
440												
460												
480												
500												
Passagensdecabo	3											
Moitão	18t											
Modo telescópico	I	1	1	1	1	2	3	1	1	1	2	3
	II	1	1	2	3	3	2	1	2	3	3	3
	III	2	3	3	3	2	2	3	3	3	3	2
	IV	3	3	3	2	2	2	3	3	3	2	2
	V	3	3	2	2	2	2	3	3	2	2	2
	VI	3	2	2	2	2	2	3	2	2	2	2

Unidt

Patolas totalmente estendidas a 8,0m, 23t de contrapeso, operação traseira e lateral												
Raio (m)	Jib de montagem de 3,0m, angulação do jib 30°											
	51.0	51.0	51.0	51.0*	55.2	55.2	55.2*	59.4	59.4*	63.6*	70.0*	
40												
45												
50												
55												
60												
70												
80												
90												
100												
110												
120												
140	9.5	11.0	12.5	14.0	9.5	11.0	12.0					
160	8.5	10.0	11.5	13.0	8.7	10.0	11.0	9.0	10.0			
180	7.5	9.0	10.5	12.0	8.1	9.3	10.0	8.5	9.5	7.8		
200	7.0	8.2	9.5	11.0	7.5	8.6	9.4	8.0	8.8	7.5	6.5	
220	6.5	7.5	8.7	10.0	6.9	8.0	8.8	7.5	8.2	7.2	6.2	
240	5.7	6.9	8.0	8.5	6.3	7.4	8.2	6.8	7.5	6.9	6.0	
260	5.2	6.3	7.4	7.2	5.8	6.8	7.5	6.2	6.9	6.4	5.7	
280	4.8	5.7	6.7	6.2	5.3	6.2	6.4	5.7	6.4	5.9	5.3	
300	4.4	5.3	5.8	5.3	4.8	5.7	5.4	5.3	5.8	5.4	4.9	
320	4.1	4.8	5.0	4.5	4.4	5.3	4.6	4.9	5.0	5.0	4.5	
340	3.8	4.4	4.2	3.7	4.1	4.5	3.9	4.5	4.3	4.5	4.2	
360	3.5	4.0	3.6	3.1	3.8	4.0	3.3	4.1	3.6	3.8	3.9	
380	3.2	3.7	3.0	2.5	3.5	3.4	2.7	3.6	3.0	3.4	3.5	
400	2.9	3.2	2.5	2.0	3.2	2.9	2.2	3.1	2.5	2.9	3.0	
420	2.6	2.7	2.1	1.5	2.9	2.4	1.7	2.7	2.0	2.4	2.5	
440	2.4	2.3	1.7	1.1	2.6	2.0	1.3	2.3	1.6	2.0	2.1	
460					2.2	1.6	1.0	1.9	1.2	1.6	1.7	
480								1.6	0.9	1.2	1.3	
500									0.9	1.0		
Passagensdecabo	3						2					
Moitão	60t											
Modo telescópico	I	1	1	2	3	1	2	3	2	3	3	4
	II	2	3	3	3	3	3	3	3	3	3	4
	III	3	3	3	3	3	3	3	3	3	3	4
	IV	3	3	3	2	3	3	3	3	3	3	4
	V	3	3	2	2	3	3	2	3	3	3	4
	VI	3	2	2	2	3	2	2	3	2	3	4

ESPECIFICAÇÕES TÉCNICAS

Superestrutura do Guindaste

Lança principal	Lança principal de 7 seções em formato "U" fabricada em chapa de aço de alta resistência (960 Mpa), com extensão total de 13,2m-70.0m.
Jib	Jibs treliçados (padrão) de 2 seções (10,4m, 17,5m), ângulo de operação: 0°, 15°, 30°. Um jib extensor de 9,5m (opcional) pode ser instalado com a lança principal ou jibs padrão.
Jib de montagem	Jib opcional de montagem, de 3m, com ângulo de operação 0°, 30°, máx. de 3 passagens de cabo, carga máx. de içamento de 18t. Pode ser transportado acoplado ao guindaste.
Guincho	Guincho principal e auxiliar com motores de pistão de deslocamento variável e redutores planetários. Cabos anti-torção de 20mm de diâmetro.
Mecanismo de rotação	Motores hidráulicos duplos de deslocamento fixo, redutor planetário e rolamento giratório. Função de giro livre.
Sistema hidráulico	Sistema de controle eletrônico e hidráulico com microposicionamento e movimentação mais eficientes. Tanque hidráulico de 740 litros.
Sistema elétrico	DC 24V, superestrutura equipada com a tecnologia CAN BUS.
Cabine do operador	Nova cabine mais espaçosa e com um design que oferece conforto e facilidade de operação equipada com ar condicionado e aquecedor.
Dispositivos de segurança	Indicador de momento de carga (LMI), limitador de fim de curso, válvula de alívio, botão de parada de emergência etc.
Contrapeso	Sistema de lastro com 34t de contrapesos, dentre as quais 11t são opcionais.

Chassi

Estrutura do chassi	Fabricado pela ZOOMLION com chapas de aço de alta resistência.
Patolas	Patolas tipo "H" de 2 estágios, base de patolamento 6,94m (L)*8m [®] . Sistema inclui uma quinta patola.
Motor	WEICHAI WP12.375E50, diesel, com potência de 276 kW, torque máx. de 1800 N.m, tanque de combustível de 400 litros.
Transmissão	Caixa de câmbio mecânico FAST com 10 marchas à frente e 2 à ré. Transmissão automática opcional com 10 marchas à frente e 1 à ré.
Eixos	Eixos I, II e V são direcionáveis, eixos III e IV são tracionáveis.
Suspensão	Eixos I e II equipados com feixe de molas e eixos III e IV feixe de molas + suspensão pneumática com barras de reação em "V", permitindo ajustar a performance de carga de acordo com a pressão do ar.
Direção	Eixos I, II e V direcionáveis com sistema de assistência hidráulica.
Freio	Freios de serviço, estacionamento, emergência e auxiliar.
Pneus	385 / 95R25 (eixos I e II), 325 / 95R24 (eixos III e IV), 325 / 95R24 ou 415 / 80R22 (eixo V).
Cabine do motorista	Cabine do motorista moderna e sofisticada, com design que oferece conforto e facilidade de operação, equipada com ar condicionado e aquecedor.

PARÂMETROS TÉCNICOS

	Item		Valor	Observações
Performance de trabalho	Mais configurações de Jib disponíveis como opcionais.	kg	100000	
	Momento máx. de carga da lança básica	kN.m	3611	
	Momento máx. de carga da lança principal totalmente estendida	kN.m	1646	
	Altura máx. de içamento da lança básica.	m	14.4	
	Altura máx. de içamento da lança principal	m	70.6	
	Altura máx. de içamento do jib	m	87.8	Comprimento da lança principal: 70m
	Altura máx. de içamento do jib (jib extensor de 9,5m + jib padrão de 7m)	m	97.8	Comprimento da lança principal: 63,6m
Velocidades de trabalho	Velocidade máx. do cabo de içamento (guincho principal)	m/min	130	
	Velocidade máx. do cabo de içamento (guincho auxiliar)	m/min	110	
	Tempo de subida/descida dalança	s	60	
	Tempo de extensão/extração dalança	s	750	
	Velocidade de rotação	r/min	0-1.6	
Velocidades de condução	Velocidade máx. de condução	km/h	≥80	
	Capacidade máxima de subida de rampa	%	40	
	Diâmetro mínimo de giro	m	24	
	Distância mínima do solo	mm	310	
	Consumo de combustível a cada 100 km	L	46	
Massa	Peso morto em deslocamento	kg	54000	
	Massa total do veículo em ordem de marcha	kg	53805	
	Carga do eixo I e II	kg	23000	
	Carga do eixo III e IV	kg	21000	
	Carga do eixo	kg	10000	
Dimensões	Dimensões gerais (C x L x A)	mm	15700x3000x3920	
	Base de patolamento (C)	m	6.94	
	Base de patolamento (L)	m	8.0	
	Raio de giro da cauda	mm	4760	
	Comprimento da lança telescópica	m	13.2-70.0	
	Ângulo da lança	°	-1-80	
	Comprimento do jib	m	10.4, 17.5	
	Angulação do jib	°	0, 15, 30	
	Jib extensor	m	9.5	Opcional
	Angulação do jib extensor	°	0	
	Jib padrão	m	7	Opcional
	Angulação do jib padrão	°	0	
	Jib de montagem	m	3	Opcional
	Angulação do jib de montagem	°	30	

ZOOMLION

Zoomlion Heavy Industry Science & Technology Co.,Ltd.

677 Lugu Road, Zoomlion Industrial Park, Changsha, Hunan, China, 410205

Copyright©2021. Todos os direitos reservados. Qualquer reprodução e/ou cópia total ou parcial deste material sem a prévia autorização da Zoomlion é expressamente proibida.



As especificações do produto estão sujeitas a alterações sem aviso prévio. As fotos e/ou desenhos contidos neste material são meramente ilustrativos. Por favor consulte seu representante local ZOOMLION para maiores informações.

Website: en.zoomlion.com 11.11.2021