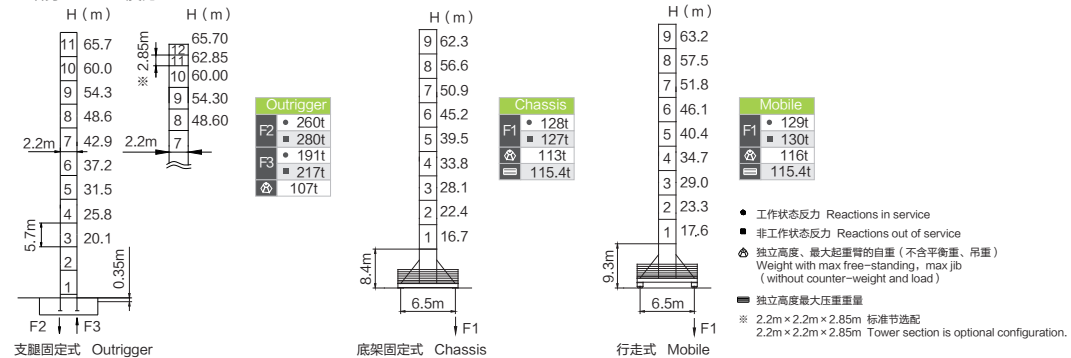


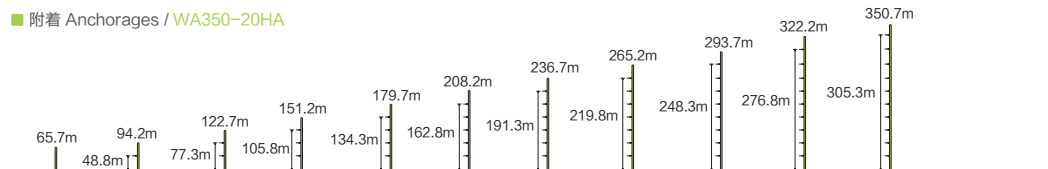
平衡重 Counter-weight

平衡重			3900 / 3000 / 2000kg		
			PHZ3900	PHZ3000M	PHZ2000H
80m	21m	24.5t	5	1	1
77.5m		24.5t	5	1	1
75m		25.4t	6	0	1
72.5m		24.5t	5	1	1
70m		23.4t	6	0	0
67.5m		22.5t	5	1	0
65m		23.4t	6	0	0
62.5m		22.5t	5	1	0
60m		22.5t	5	1	0
57.5m		21.5t	5	0	1
55m		20.6t	4	1	1
52.5m		19.5t	5	0	0
50m		18.6t	4	1	0
47.5m		18.6t	4	1	0
45m	17m	22.5t	5	1	0
42.5m		20.6t	4	1	1
40m		19.5t	5	0	0
37.5m		19.5t	5	0	0
35m		18.6t	4	1	0
32.5m		17.6t	4	0	1
30m		16.7t	3	1	1

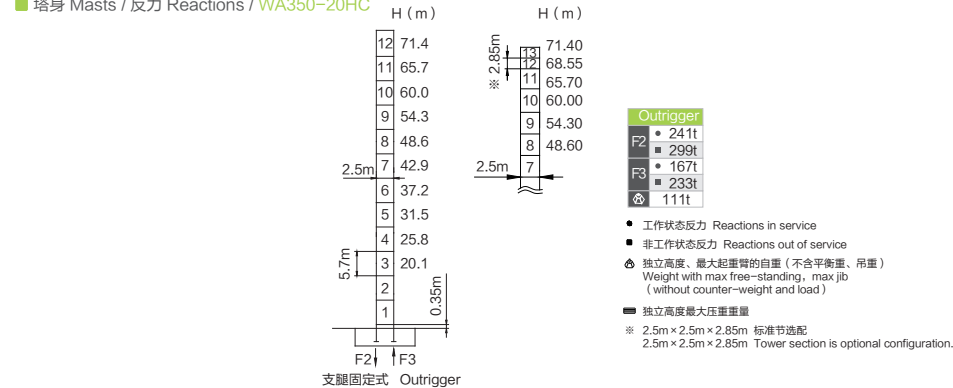
## ■ 塔身 Masts / 反力 Reactions / WA350-20HA



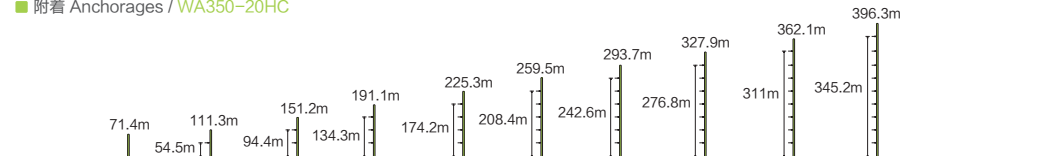
## ■ 附着 Anchorages / WA350-20HA



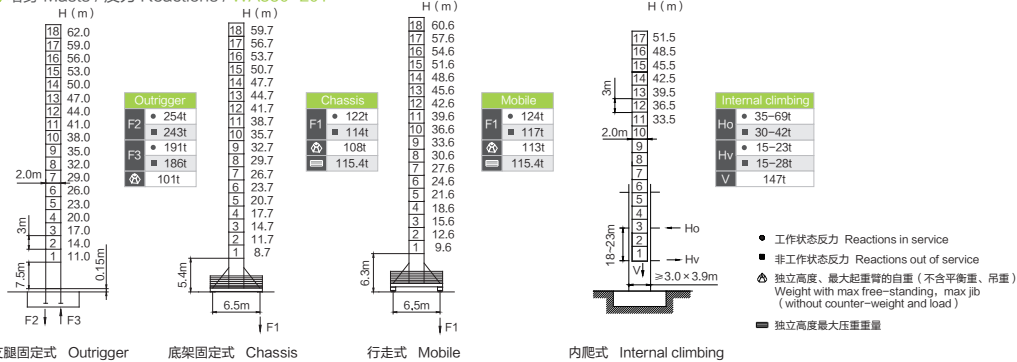
## ■ 塔身 Masts / 反力 Reactions / WA350-20HC



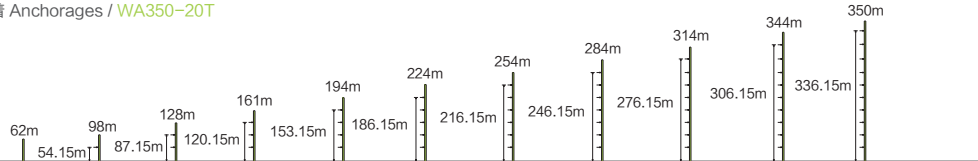
## ■ 附着 Anchorages / WA350-20HC



### 塔身 Masts / 反力 Reactions / WA350-20T



### 附着 Anchorages / WA350-20T









### 起重特性 Load Diagrams

Capacity (t)	Radius (m)	Max Capacity (m)	Capacity (t)																						
			15.0	20.0	25.0	30.0	32.5	35.0	37.5	40.0	42.5	45.0	47.5	50.0	52.5	55.0	57.5	60.0	62.5	65.0	67.5	70.0	72.5	75.0	77.5
80 (R=82.2)	⊥	5.2-24.2/10.0	10.0	9.6	7.8	7.1	6.5	6.0	5.5	5.1	4.8	4.4	4.2	3.9	3.7	3.5	3.3	3.1	3.0	2.8	2.7	2.5	2.4	2.3	2.2
	⊥	4.2-12.9/20.0	16.6	11.7	8.9	7.0	6.3	5.7	5.2	4.7	4.4	4.0	3.7	3.4	3.2	2.9	2.7	2.5	2.4	2.2	2.0	1.9	1.8	1.7	1.5
77.5 (R=79.7)	⊥	5.2-25.5/10.0	10.0		8.3	7.5	6.9	6.4	5.9	5.5	5.1	4.8	4.5	4.2	4.0	3.7	3.5	3.4	3.2	3.0	2.9	2.7	2.6	2.5	
	⊥	4.2-13.5/20.0	17.7	12.5	9.5	7.5	6.8	6.2	5.6	5.1	4.7	4.3	4.0	3.7	3.4	3.2	3.0	2.8	2.6	2.4	2.3	2.1	2.0	1.9	1.7
75 (R=77.2)	⊥	5.2-31.2/10.0	10.0		9.6	8.8	8.1	7.5	7.0	6.6	6.1	5.8	5.5	5.2	4.9	4.6	4.4	4.2	4.0	3.8	3.7	3.5	3.4	3.2	
	⊥	4.2-16.4/20.0	20.0	15.9	12.2	9.8	8.9	8.1	7.4	6.8	6.3	5.9	5.4	5.1	4.8	4.5	4.2	3.9	3.7	3.5	3.3	3.1	3.0	2.8	
72.5 (R=74.7)	⊥	5.2-31.5/10.0	10.0		9.7	8.9	8.2	7.6	7.1	6.6	6.2	5.8	5.5	5.2	4.9	4.7	4.5	4.2	4.1	3.9	3.7	3.5	3.4	3.2	
	⊥	4.2-16.6/20.0	20.0	16.0	12.3	9.9	9.0	8.2	7.5	6.9	6.4	5.9	5.5	5.1	4.8	4.5	4.2	4.0	3.8	3.5	3.4	3.2	3.0		
70 (R=72.2)	⊥	5.2-31.7/10.0	10.0		9.7	8.9	8.3	7.7	7.1	6.7	6.3	5.9	5.6	5.3	5.0	4.7	4.5	4.3	4.1	3.9	3.7	3.5	3.4	3.2	
	⊥	4.2-16.7/20.0	20.0	16.2	12.4	10.0	9.0	8.2	7.5	7.0	6.4	6.0	5.6	5.2	4.9	4.6	4.3	4.0	3.8	3.6	3.4	3.2			
67.5 (R=69.7)	⊥	5.2-31.8/10.0	10.0		9.8	9.0	8.3	7.7	7.2	6.7	6.3	5.9	5.6	5.3	5.0	4.7	4.5	4.3	4.1	3.9	3.7	3.5	3.4	3.2	
	⊥	4.2-16.7/20.0	20.0	16.2	12.4	10.0	9.1	8.3	7.6	7.0	6.5	6.0	5.6	5.2	4.9	4.6	4.3	4.0	3.8	3.6	3.4				
65 (R=67.2)	⊥	5.2-33.0/10.0	10.0		9.3	8.6	8.0	7.5	7.0	6.6	6.2	5.8	5.5	5.2	5.0	4.7	4.5	4.3	4.1	3.9	3.7	3.5	3.4	3.2	
	⊥	4.2-17.3/20.0	20.0	16.9	13.0	10.4	9.5	8.6	7.9	7.3	6.8	6.3	5.9	5.5	5.1	4.8	4.5	4.3	4.0	3.8					
62.5 (R=64.7)	⊥	5.2-34.0/10.0	10.0		9.7	8.9	8.3	7.7	7.2	6.8	6.4	6.0	5.7	5.4	5.1	4.9	4.7	4.5	4.3	4.1	3.9	3.7	3.5	3.4	3.2
	⊥	4.2-17.8/20.0	20.0	17.5	13.4	10.8	9.8	9.0	8.2	7.6	7.0	6.5	6.1	5.7	5.3	5.0	4.7	4.4	4.2						
60 (R=62.2)	⊥	5.2-35.3/10.0	10.0		9.3	8.7	8.1	7.6	7.1	6.7	6.3	6.0	5.7	5.4	5.1	4.9	4.7	4.5	4.3	4.1	3.9	3.7	3.5	3.4	3.2
	⊥	4.2-18.5/20.0	20.0	18.3	14.1	11.3	10.3	9.4	8.6	8.0	7.4	6.9	6.4	6.0	5.6	5.3	5.0	4.7							
57.5 (R=59.7)	⊥	5.2-35.4/10.0	10.0		9.4	8.7	8.1	7.6	7.1	6.7	6.3	6.0	5.7	5.4	5.1	4.9	4.7	4.5	4.3	4.1	3.9	3.7	3.5	3.4	3.2
	⊥	4.2-18.6/20.0	20.0	18.3	14.1	11.4	10.3	9.4	8.7	8.0	7.4	6.9	6.4	6.0	5.6	5.3	5.0								

■ 起重特性 Load Diagrams

Max Capacity mt		15.0	20.0	25.0	30.0	32.5	35.0	37.5	40.0	42.5	45.0	47.5	50.0	52.5	55.0		
55 (R=57.2)	⊥	5.2-36.4/10.0						10.0		9.7	9.0	8.4	7.8	7.4	6.9	6.5	6.2
	⊥	4.2-19.0/20.0	20.0	18.9	14.5	11.7	10.7	9.7	9.0	8.3	7.7	7.1	6.7	6.2	5.8	5.5	
52.5 (R=54.7)	⊥	5.2-36.6/10.0						10.0		9.7	9.0	8.4	7.9	7.4	7.0	6.6	
	⊥	4.2-19.1/20.0	20.0	19.0	14.7	11.8	10.7	9.8	9.0	8.3	7.7	7.2	6.7	6.3	5.9		
50 (R=52.2)	⊥	5.2-37.5/10.0						10.0		9.3	8.7	8.1	7.6	7.2			
	⊥	4.2-19.6/20.0	20.0	19.6	15.1	12.2	11.1	10.1	9.3	8.6	8.0	7.4	6.9	6.5			
47.5 (R=49.7)	⊥	5.2-37.8/10.0						10.0		9.4	8.7	8.2	7.7				
	⊥	4.2-19.8/20.0	20.0	19.7	15.2	12.3	11.2	10.2	9.4	8.7	8.0	7.5	7.0				
45 (R=47.2)	⊥	5.2-37.8/10.0						10.0		9.4	8.8	8.2					
	⊥	4.2-19.8/20.0	20.0	19.7	15.2	12.3	11.2	10.2	9.4	8.7	8.1	7.5					
42.5 (R=44.7)	⊥	5.2-38.0/10.0						10.0		9.4	8.8						
	⊥	4.2-19.8/20.0	20.0	19.8	15.3	12.3	11.2	10.3	9.4	8.7	8.1						
40 (R=42.2)	⊥	5.2-38.2/10.0						10.0		9.5							
	⊥	4.2-20.0/20.0	20.0		15.4	12.4	11.3	10.3	9.5	8.8							
37.5 (R=39.7)	⊥	5.2-37.5/10.0						10.0									
	⊥	4.2-20.1/20.0	20.0		15.5	12.5	11.4	10.4	9.6								
35 (R=37.2)	⊥	5.2-35.0/10.0						10.0									
	⊥	4.2-20.2/20.0	20.0		15.6	12.6	11.5	10.5									
32.5 (R=34.7)	⊥	5.2-32.5/10.0						10.0									
	⊥	4.2-20.2/20.0	20.0		15.7	12.6	11.5										
30 (R=32.2)	⊥	5.2-30.0/10.0						10.0									
	⊥	4.2-20.2/20.0	20.0		15.6	12.6											

■ 传动机构 Mechanisms

配置 Configuration		⊂		⊂⊂		kW		
 起升 Hoisting	H75FL50-880A	m/min	95	38	47.5	19	75	880m
		t	2.5	10.0	5.0	20.0		
 回转 Slewing	S75CA-130.146LB14/12A S75CN-130.146LB14/12A	r/min	0~0.8				7.5kW×3	▲超出咨询我们  Consult us if overtop
 变幅 Trolleying	BP75A	m/min	0~80 m/min				7.5	
 行走 Travelling	ZAH52A-D×2 ZDH52A-D×2	m/min	0~25				5.2 kW×4	
	380V(±10%)50Hz	105+5.2×4 (kW)						

■ 运输单元 Packing list / 上装 Upper Parts / WA350-20HA / WA350-20HC / WA350-20T

序号 No.	名称 Description	形状 Sketch	长 L(m)	宽 B(m)	高 H(m)	单件重量 Weight per Piece(t)	数量 Qty	序号 No.	名称 Description	形状 Sketch	长 L(m)	宽 B(m)	高 H(m)	单件重量 Weight per Piece(t)	数量 Qty
1	平衡臂前臂节 The front section of counter-jib		6.87	1.64	2.51	4.45	1	6	臂节 III Jib III		10.27	1.49	2.43	2.78	1
2	平衡臂中臂节 The middle section of counter-jib		4.20	1.58	0.66	1.31	1	7	臂节 IV Jib IV		10.24	1.49	2.38	1.95	1
3	平衡臂后臂节 The back section of counter-jib		11.91	1.68	0.77	5.70	1	8	臂节 V Jib V		5.20	1.49	1.94	0.90	1
4	臂节 I (含变幅机构) Jib I (include Trolleying Mechanism)		10.37	1.74	2.57	5.05	1	9	臂节 VI Jib VI		2.71	1.49	1.92	0.43	1
5	臂节 II Jib II		10.33	1.49	2.46	3.45	1	10	臂节 VII Jib VII		10.11	1.49	1.91	1.32	1

■ 运输单元 Packing list / 上装 Upper Parts / WA350-20HA / WA350-20HC / WA350-20T

序号 No.	名称 Description	形状 Sketch	长 L(m)	宽 B(m)	高 H(m)	单件重量 Weight per Piece(t)	数量 Qty	序号 No.	名称 Description	形状 Sketch	长 L(m)	宽 B(m)	高 H(m)	单件重量 Weight per Piece(t)	数量 Qty
11	臂节 VIII Jib VIII		2.61	1.49	1.88	0.28	1	16	起升机构 Hoisting mechanism		2.93	2.21	1.41	4.38	1
12	臂节 IX Jib IX		5.20	1.49	1.87	0.49	1	17	载重小车 Trolley		2.17	1.71	0.93	0.41	1
13	臂节 X Jib X		5.20	1.49	1.87	0.38	1				2.05	1.71	0.93	0.30	1
14	臂节 XI Jib XI		10.14	1.49	1.87	0.64	1	18	吊钩 Hook		1.61	2.34	0.35	0.71	1
15	臂尖节 Jib end		1.01	1.74	2.26	0.16	1	19	司机室 Cabin		2.10	1.30	2.25	0.70	1

■ 运输单元 Packing list / 下装 Bottom Parts / WA350-20HA / WA350-20HC

序号 No.	名称 Description	形状 Sketch	长 L(m)	宽 B(m)	高 H(m)	单件重量 Weight per Piece(t)	数量 Qty
1	回转总成 Slewing assembly		5.57	2.80	3.00	9.51	1
2	过渡节 Transition section		2.80	2.80	4.02	3.43	1
3	爬升架 Climbing equipment		11.83	2.75	2.75	6.97	1
4	基础节 主弦杆 Base Tower Section Main Chord		6.00	0.35	0.35	0.74	4
5	加强节 主弦杆 Reinforced Tower Section Main Chord		6.00	0.35	0.35	0.74	4
6	标准节 主弦杆 Tower Section Main Chord		6.00	0.35	0.35	0.70	4×9

序号 No.	名称 Description	形状 Sketch	长 L(m)	宽 B(m)	高 H(m)	单件重量 Weight per Piece(t)	数量 Qty
1	回转总成 Slewing assembly		5.92	2.80	2.93	10.5	1
2	过渡节 Transition section		3.19	3.19	4.02	3.6	1
3	爬升架 Climbing equipment		11.43	3.41	3.23	6.64	1
4	基础节主弦杆 Base Tower Section Main Chord		6.00	0.35	0.35	0.82	4×1
5	标准节主弦杆 Tower Section Main Chord		6.00	0.35	0.35	0.70	4×11

■ 运输单元 Packing list / 下装 Bottom Parts / WA350-20T

序号 No.	名称 Description	形状 Sketch	长 L(m)	宽 B(m)	高 H(m)	单件重量 Weight per Piece(t)	数量 Qty
1	回转总成 Slewing assembly		5.61	2.82	3.00	9.41	1
2	过渡节 Transition section		2.69	2.69	2.51	2.13	1
3	爬升架 Climbing equipment		7.25	2.67	2.67	4.84	1

序号 No.	名称 Description	形状 Sketch	长 L(m)	宽 B(m)	高 H(m)	单件重量 Weight per Piece(t)	数量 Qty
4	基础节 Base Tower Section		7.82	2.04	2.08	5.12	1
5	标准节片 Sheet Section		3.50	2.12	0.70	0.45	4×18