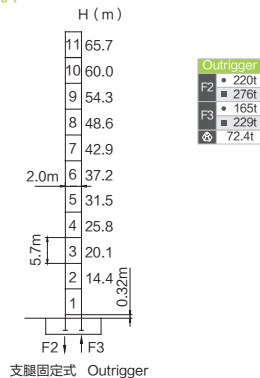


平衡重		3000/2500/1300kg			
塔高	平衡重	PHZ-3000	PHZ-2500	PHZ-1300	
70m	17.8m	23500	7	1	0
67.5m	17.8m	23500	7	1	0
65m	17.8m	22300	7	0	1
62.5m	17.8m	21800	6	1	1
60m	17.8m	21800	6	1	1
57.5m	17.8m	21800	6	1	1
55m	17.8m	21800	6	1	1
52.5m	17.8m	21000	7	0	0
50m	17.8m	20500	6	1	0
47.5m	17.8m	19300	6	0	1
45m	17.8m	19300	6	0	1
42.5m	17.8m	18800	5	1	1
40m	17.8m	17500	5	1	0
37.5m	17.8m	15000	5	0	0
35m	17.8m	14500	4	1	0
32.5m	17.8m	14500	4	1	0
30m	17.8m	13300	4	0	1

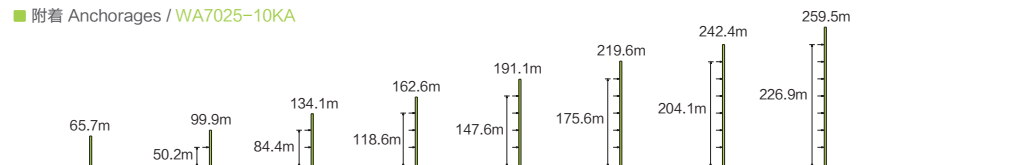
塔身 Masts / 反力 Reactions / WA7025-10KA



Outrigger	
F2	220t
F3	276t
F3	165t
F3	229t
F3	72.4t

- 工作状态反力 Reactions in service
- 非工作状态反力 Reactions out of service
- ⊕ 独立高度、最大起重臂的自重 (不含平衡重、吊重)
Weight with max free-standing, max jib (without counter-weight and load)
- 独立高度最大压重量







附着 Anchorages / WA7025-10KA



■ 起重特性 Load Diagrams

Max Capacity m/t		20.0	22.5	25.0	27.5	30.0	32.5	35.0	37.5	40.0	42.5	45.0	47.5	50.0
50 (R=51.8)	2.8 ~ 50.0/5	5.00												
	2.8 ~ 28.3/10	10.00			9.34		8.52	7.82	7.21	6.68	6.22	5.80	5.44	5.11
47.5 (R=49.3)	2.8 ~ 47.5/5	5.00												
	2.8 ~ 29.0/10	10.00			9.62		8.77	8.05	7.43	6.88	6.41	5.98	5.61	
45 (R=46.8)	2.8 ~ 45.0/5	5.00												
	2.8 ~ 29.1/10	10.00			9.65		8.80	8.08	7.45	6.91	6.43	6.01		
42.5 (R=44.3)	2.8 ~ 42.5/5	5.00												
	2.8 ~ 29.0/10	10.00			9.62		8.77	8.05	7.43	6.88	6.41			
40 (R=41.8)	2.8 ~ 40.0/5	5.00												
	2.8 ~ 28.7/10	10.00			9.51		8.68	7.96	7.34	6.81				
37.5 (R=39.3)	2.8 ~ 37.5/5	5.00												
	2.8 ~ 28.6/10	10.00			9.47		8.63	7.92	7.31					
35 (R=36.8)	2.8 ~ 35.0/5	5.00												
	2.8 ~ 28.3/10	10.00			9.33		8.51	7.81						
32.5 (R=34.3)	2.8 ~ 32.5/5	5.00												
	2.8 ~ 28.0/10	10.00			9.22		8.41							
30 (R=31.8)	2.8 ~ 30.0/5	5.00												
	2.8 ~ 27.7/10	10.00			9.11									

■ 传动机构 Mechanisms

配置 Configuration			D		DD		kW	
 起升 Hoisting	H37FC25-530A	m/min	95	38	47.5	19	37	530m(6 layers)
		t	1.25	5	2.5	10		
 回转 Slewing	S75CA-130LB12/14A S75CN-130LB12/14A	r/min	0~0.8				7.5kW × 2	▲超出咨询我们 Consult us if overtop
		 变幅 Trolleying	BP55B	m/min	0~75			
 行走 Travelling	ZA52-D B52-D			m/min	0~25			
			380V(±10%)50Hz	57.5+5.2 × 2 (kW)				

