

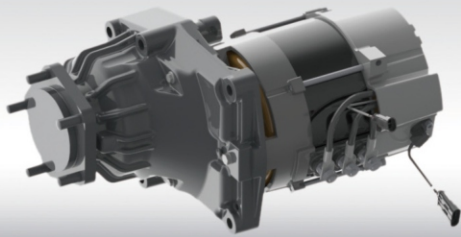
FE 16H/18H/20H

THREE-WHEEL ELECTRIC FORKLIFT

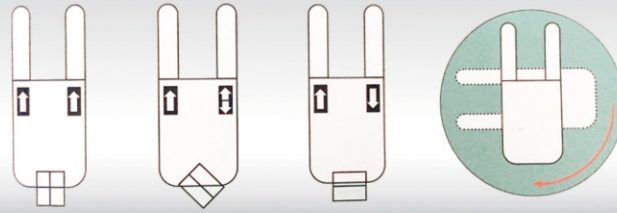


ZOOMLION

Electric Forklift



Full AC drive system, imported wet brake.



The front wheel is driven by two independent motor, with the increase of the steering angle, the output speed of the two motors is different realizing forklift In-situ rotation.



Mast triple full free equipped with double front cylinder, increasing greatly the driver operating field of vision.



optional Fingertip control system set to rise and fall, forward, backward, lateral and emergency stop switch, a horn, lighting control and other control buttons in one.



Advanced suspension seat with suspension damping function, which can ease the driver fatigue, and improve work efficiency.



Mast intelligent buffer system, when the fork falls to the ground, the descent speed will be automatically reduced to prevent the damage to the goods from impact of vehicle.



The battery cover adopts hydraulic tappet support, it can be fully opened, easy to maintain the battery.



Open the balance heavy cover, you can control the electrical maintenance.



With multi-function LCD display users can easily monitor the performance and working status of the vehicle through the information displayed on the display.

Machine Parameters

Characteristics			FE16	FE16	FE18	FE18	FE20	FE20
Drive type	/	/	Battery	Battery	Battery	Battery	Battery	Battery
Driving mode	/	/	Seated	Seated	Seated	Seated	Seated	Seated
Capacity	Q(kg)	Q(lb)	1600	3520	1800	3968	2000	4400
Load center distance	c(mm)	c(in)	500	20	500	20	500	20
Front overhang	x(mm)	x(in)	403	16	403	16	403	16
Wheelbase	y(mm)	y(in)	1360	54	1360	54	1470	58
Weight								
Curb weight (with battery)	kg	lb	3170	6989	3250	7165	3450	7606
Full load axial load	kg	lb	4260/490	9392/1080	4590/460	10119/1014	5020/430	11067/948
No load axial load	kg	lb	1600/1590	3527/3505	1590/1680	3505/3704	1650/1800	3637/3968
Tyre								
Tyre type	/	/	Solid tyre	Solid tyre	Solid tyre	Solid tyre	Solid tyre	Solid tyre
Tire type, front	/	/	18X7-8	18X7-8	18X7-8	18X7-8	18X7-8	18X7-8
Tire type, rear	/	/	15X4,5-8	15X4,5-8	15X4,5-8	15X4,5-8	15X4,5-8	15X4,5-8
Number of wheels front / rear (x= drive)	/	/	2x/2	2x/2	2x/2	2x/2	2x/2	2x/2
Tread width, front	b10(mm)	b10(in)	920	36	920	36	960	38
Tread width, rear	b11(mm)	b11(in)	180	7	180	7	180	7
Size								
The fork carriage forward / backward	°	°	6/6.5	6/6.5	6/6.5	6/6.5	6/6.5	6/6.5
Mast lowered height	h1(mm)	h1(in)	2020	80	2020	80	2020	80
Free lift height	h2(mm)	h2(in)	1106	44	1106	44	1106	44
Lifting height	h3(mm)	h3(in)	3000	118	3000	118	3000	118
Mast extended height	h4(mm)	h4(in)	4024	158	4024	158	4024	158
Cab height	h6(mm)	h6(in)	2050	81	2050	81	2050	81
Seat height	h7(mm)	h7(in)	890	35	890	35	890	35
Traction height	h10(mm)	h10(in)	455	18	455	18	455	18
Overall length	L1(mm)	L1(in)	2885	114	2885	114	2995	118
Length to fork face	L2(mm)	L2(in)	1960	77	1960	77	2074	82
Overall width	b1/b2(mm)	b1/b2(in)	1090	43	1090	43	1170	46
Fork size	s/e/l(mm)	s/e/l(in)	40/100/920	2/4/36	40/100/920	2/4/36	40/100/920	2/4/36
Mast ground clearance	m1(mm)	m1(in)	90	6	90	6	90	6
Wheelbase center clearance	m2(mm)	m2(in)	90	6	90	6	90	6
Width of transverse channel with 1000 x 1200 pallet	Ast1(mm)	Ast1(in)	3299	130	3299	130	3406	134
Turning radius	Wa(mm)	Wa(in)	1575	62	1575	62	1680	66
Performance								
Travel speed full-loaded / no-loaded speed	km/h	mph	13/14	8/9	13/14	8/9	13/14	8/9
Lifting speed full-loaded/ no-load	mm/s	ln/s	320/400	13/16	320/400	13/16	300/390	12/15
Lowering speed full-loaded / no-loaded	mm/s	ln/s	405/400	15.9/15.7	405/400	15.9/15.7	405/400	15.9/15.7
Maximum gradeability 5min full-loaded / no-loaded	%	%	12/15	12/15	11/15	11/15	10.5/15	10.5/15
Braking mode	/	/	Hydraulic / Mechanical	Hydraulic / Mechanical	Hydraulic / Mechanical	Hydraulic / Mechanical	Hydraulic / Mechanical	Hydraulic / Mechanical
Power								
Drive motor rated power, S2 60min	kw	kw	4.8x2	4.8x2	4.8x2	4.8x2	4.8x2	4.8x2
Lifting motor rated power, S3 15%	kw	kw	11	11	11	11	11	11
Battery voltage / capacity 5 hours discharge rate	V/Ah	V/Ah	48/500	48/500	48/500	48/500	48/600	48/600
Battery weight	kg	lb	900	1984	900	1984	1005	2216
Other								
Drive control mode	/	/	AC	AC	AC	AC	AC	AC
Sound level at the driver's ear acc. to DIN 12053	dB(A)	dB(A)	75	75	75	75	75	75

Notes:realice benchmarking in accordance with parameters of mast S450

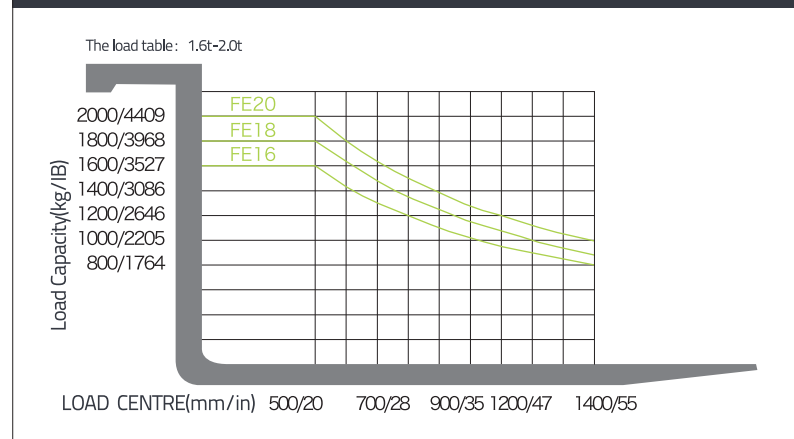
M Wide View Standard Mast

Lifting height mm/In	Coading capacity			Mast lowered height		Free lifting height mm/In	Masttilt Angle f/r °
	1.6T(kg/lb)	1.8T(kg/lb)	2.0T(kg/lb)	Forks landing(mm/In)	Height with Backrest(mm/In)		
2000/79	1600/3527	1800/3968	2000/4409	1520/60	3024/119	8/3.35	6/6.5
2500/98	1600/3527	1800/3968	2000/4409	1770/70	3524/139	8/3.35	6/6.5
2700/106	1600/3527	1800/3968	2000/4409	1870/74	3724/147	8/3.35	6/6.5
3000/118	1600/3527	1800/3968	2000/4409	2020/80	4024/158	8/3.35	6/6.5
3300/130	1600/3527	1800/3968	2000/4409	2170/85	4324/170	8/3.35	6/6.5
3500/138	1600/3527	1800/3968	2000/4409	2270/89	4524/178	8/3.35	6/6.5
4000/157	1500/3307	1600/3527	1800/3968	2570/101	5024/198	8/3.35	3/5
4250/167	1400/3086	1500/3307	1700/3748	2695/106	5274/208	8/3.35	3/5
4500/177	1350/2976	1400/3086	1600/3527	2820/111	5524/217	8/3.35	3/5

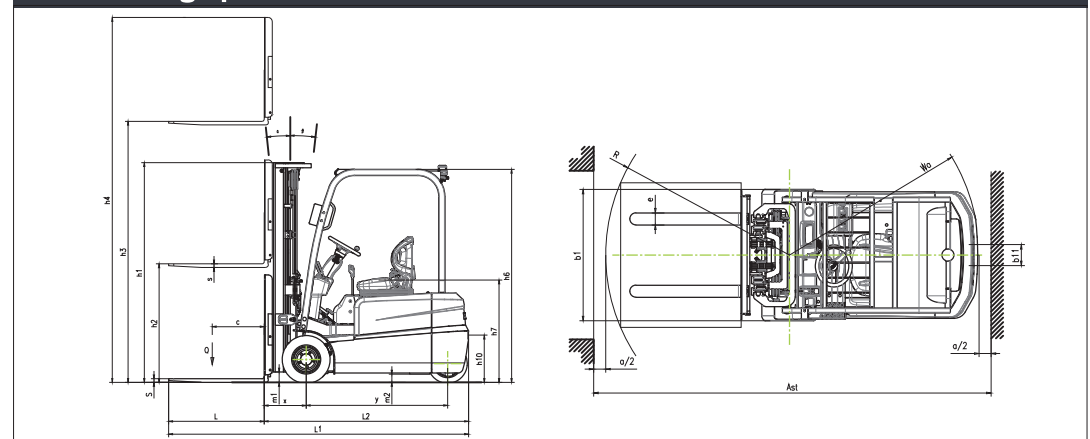
S 3s-stage full free mast

Lifting height mm/In	Coading capacity			Mast lowered height		Free lifting height mm/In	Masttilt Angle f/r °
	1.6T(kg/lb)	1.8T(kg/lb)	2.0T(kg/lb)	Forks landing(mm/In)	Height with Backrest(mm/In)		
4000/157	1450/3197	1550/3417	1650/3638	1940/76	5024/198	891/35	3/5
4350/171	1350/2976	1450/3197	1600/3527	2055/81	5374/212	1056/42	3/5
4500/177	1300/2866	1350/2976	1500/3307	2105/83	5524/217	1106/44	3/5
4800/189	1200/2646	1250/2756	1400/3086	2205/87	5824/229	1206/47	3/5
5000/197	1150/2535	1200/2646	1350/2976	2270/89	6024/237	1271/50	3/5
5500/217	1050/2315	1100/2425	1250/2756	2490/98	6554/258	1491/59	3/5
6000/236	850/1874	900/1984	1150/2535	2655/105	7054/278	1656/65	3/5

CAPACITY CHART



Machine 2D graph



Standard Equipment

- | | | |
|---|--|--|
| <input type="checkbox"/> Wideview mast | <input type="checkbox"/> Timer | <input type="checkbox"/> Oil pressure indicator |
| <input type="checkbox"/> Handle | <input type="checkbox"/> Combined instrument pannel | <input type="checkbox"/> Toolbox |
| <input type="checkbox"/> Suspension seat | <input type="checkbox"/> Electric Horn | <input type="checkbox"/> Water temperature gauge |
| <input type="checkbox"/> Backrest | <input type="checkbox"/> Turning signal | <input type="checkbox"/> Hydraulic oil return filter |
| <input type="checkbox"/> Reversing light | <input type="checkbox"/> Service brake | <input type="checkbox"/> Hydraulic oil intake filter |
| <input type="checkbox"/> Reversing buzzer | <input type="checkbox"/> Parking brake | <input type="checkbox"/> Hydraulic oil level gauge |
| <input type="checkbox"/> Rearview mirror | <input type="checkbox"/> Lifting & tilting handle | |
| <input type="checkbox"/> Light switch | <input type="checkbox"/> Speed limit valve | |
| <input type="checkbox"/> Overhead guard | <input type="checkbox"/> Rubber pad | |
| <input type="checkbox"/> 2 piece multi valve | <input type="checkbox"/> Headlamp | |
| <input type="checkbox"/> Lamp bracket | <input type="checkbox"/> Adjustable steering wheel | |
| <input type="checkbox"/> Rear lamp | <input type="checkbox"/> Tilt oil passage self-locking valve | |
| <input type="checkbox"/> Durable pneumatic tire | <input type="checkbox"/> Key switch | |

Options

- | | |
|---|---|
| <input type="checkbox"/> Windshield | <input type="checkbox"/> Rotary work alarming light |
| <input type="checkbox"/> Suspension seat with safety switch | <input type="checkbox"/> LED lamp |
| <input type="checkbox"/> Tilt cylinder dust cover | <input type="checkbox"/> Rear light |
| <input type="checkbox"/> Mini fan | <input type="checkbox"/> File clip |
| <input type="checkbox"/> Turning Automatic speed limit | <input type="checkbox"/> Optional painting |
| <input type="checkbox"/> Tilt/Turn cylinder cover | <input type="checkbox"/> Color tire (white/green) |
| <input type="checkbox"/> Low rolling resistance tyre | |
| <input type="checkbox"/> Solid tyre | |
| <input type="checkbox"/> Fire extinguisher | |
| <input type="checkbox"/> Steel Grid guard | |

Attachment

- | | |
|--|--|
| <input type="checkbox"/> Carpet boom | <input type="checkbox"/> Revolving Flat Clamps |
| <input type="checkbox"/> Hook | <input type="checkbox"/> Wide view duplex/triplex full free mast |
| <input type="checkbox"/> Lifting boom | <input type="checkbox"/> Side shifter |
| <input type="checkbox"/> Hinged fork | |
| <input type="checkbox"/> Paper roll clamp | |
| <input type="checkbox"/> Barrel clamp | |
| <input type="checkbox"/> Extended fork | |
| <input type="checkbox"/> Extended Lift Bracket | |
| <input type="checkbox"/> Load stabilizer | |
| <input type="checkbox"/> Fork cover | |



ZOOMLION ANHUI INDUSTRIAL VEHICLE CO.,LTD

Add: No.2 Nanwei Road,Area of high-tech Development Zone Wuhu,Anhui Province,China
Post: 241002 TEL: +86 553 3020328 Website: www.zoomlion.com